

POLÍAS SÍNCRONAS MÉTRICAS

industry partners

 **harker**
SOLUTIONS

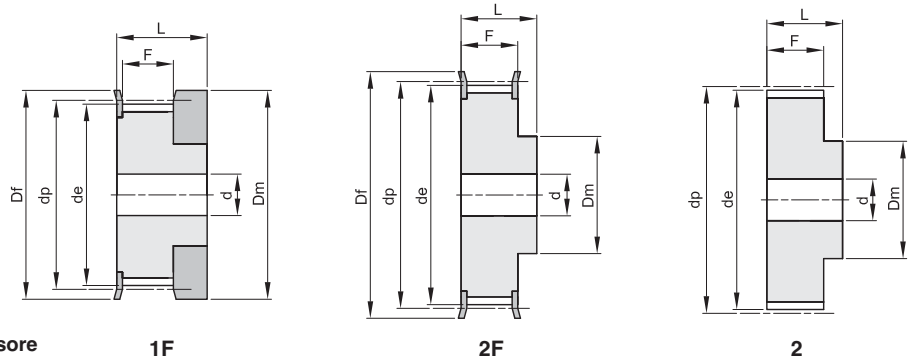


PULEGGE DENTATE PER CINGHIE SYNCHROBELT® - “HTD” SYNCHROBELT® “HTD” TIMING BELT PULLEYS

3M

PASSO 3 mm

PER CINGHIE LARGHEZZA 9 mm



Materiale: Alluminio UNI 9006 - T6 (Al)
adatto per l'ossidazione dura a spessore

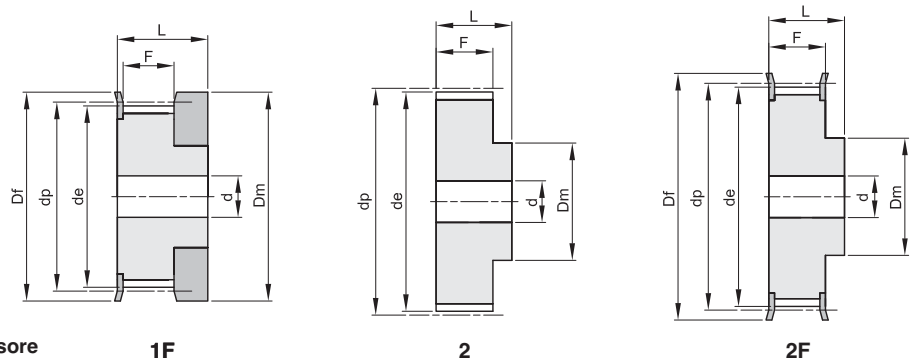
codice	tipo	materiale	denti	dp	de	Df	Dm	Di	F	L	d	n° flangia	Kg.
10 3M 09	1F	Al	10	9,55	8,79	13,0	12,0		10,2	17,5		100	0,01
12 3M 09	1F	Al	12	11,46	10,70	15,0	15,0		10,2	17,5		101	0,01
14 3M 09	1F	Al	14	13,37	12,61	16,0	16,0		10,2	17,5		102	0,01
15 3M 09	1F	Al	15	14,32	13,56	18,0	17,5		10,2	17,5		104	0,01
16 3M 09	2F	Al	16	15,28	14,52	18,0	10,0		12,8	20,6	4	104	0,01
18 3M 09	2F	Al	18	17,19	16,43	19,5	11,0		12,8	20,6	6	105	0,01
20 3M 09	2F	Al	20	19,10	18,34	23,0	13,0		12,8	20,6	6	107	0,01
21 3M 09	2F	Al	21	20,05	19,29	25,0	14,0		12,8	20,6	6	108	0,01
22 3M 09	2F	Al	22	21,01	20,25	25,0	14,0		12,8	20,6	6	108	0,01
24 3M 09	2F	Al	24	22,92	22,16	25,0	14,0		12,8	20,6	6	108	0,02
26 3M 09	2F	Al	26	24,83	24,07	28,0	16,0		12,8	20,6	6	109	0,02
28 3M 09	2F	Al	28	26,74	25,98	32,0	18,0		12,8	20,6	6	110	0,02
30 3M 09	2F	Al	30	28,65	27,89	32,0	20,0		12,8	20,6	6	110	0,03
32 3M 09	2F	Al	32	30,56	29,80	36,0	22,0		12,8	20,6	6	111	0,03
36 3M 09	2F	Al	36	34,38	33,62	38,0	26,0		13,4	22,2	6	112	0,05
40 3M 09	2F	Al	40	38,20	37,44	42,0	28,0		13,4	22,2	6	113	0,06
44 3M 09	2F	Al	44	42,02	41,26	48,0	33,0		13,4	22,2	6	114	0,07
48 3M 09	2	Al	48	45,84	45,08		33,0		13,4	22,2	8		0,11
60 3M 09	2	Al	60	57,30	56,54		33,0		13,4	22,2	8		0,11
72 3M 09	2	Al	72	68,76	68,00		33,0		13,4	22,2	8		0,15

PULEGGE DENTATE PER CINGHIE SYNCHROBELT® - "HTD" SYNCHROBELT® "HTD" TIMING BELT PULLEYS

3M

PASSO 3 mm

PER CINGHIE LARGHEZZA 15 mm



Materiale: Alluminio UNI 9006 - T6 (Al)
adatto per l'ossidazione dura a spessore

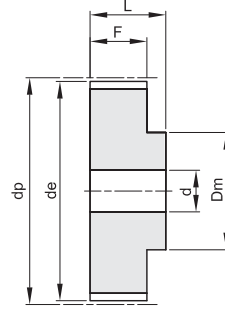
codice	tipo	materiale	denti	dp	de	Df	Dm	Di	F	L	d	n° flangia	Kg.
10 3M 15	1F	Al	10	9,55	8,79	13,0	12,0		17,0	26,0		100	0,01
12 3M 15	1F	Al	12	11,46	10,70	15,0	15,0		17,0	26,0		101	0,01
14 3M 15	1F	Al	14	13,37	12,61	16,0	16,0		17,0	26,0		102	0,01
15 3M 15	1F	Al	15	14,32	13,56	18,0	17,5		17,0	26,0		104	0,01
16 3M 15	2F	Al	16	15,28	14,52	18,0	10,0		19,5	26,0	4	104	0,01
18 3M 15	2F	Al	18	17,19	16,43	19,5	11,0		19,5	26,0	6	105	0,01
20 3M 15	2F	Al	20	19,10	18,34	23,0	13,0		19,5	26,0	6	107	0,01
21 3M 15	2F	Al	21	20,05	19,29	25,0	14,0		19,5	26,0	6	108	0,02
22 3M 15	2F	Al	22	21,01	20,25	25,0	14,0		19,5	26,0	6	108	0,02
24 3M 15	2F	Al	24	22,92	22,16	25,0	14,0		19,5	26,0	6	108	0,02
26 3M 15	2F	Al	26	24,83	24,07	28,0	16,0		19,5	26,0	6	109	0,03
28 3M 15	2F	Al	28	26,74	25,98	32,0	18,0		19,5	26,0	6	110	0,03
30 3M 15	2F	Al	30	28,65	27,89	32,0	20,0		19,5	26,0	6	110	0,04
32 3M 15	2F	Al	32	30,56	29,80	36,0	22,0		19,5	26,0	6	111	0,04
36 3M 15	2F	Al	36	34,38	33,62	38,0	26,0		20,0	30,0	6	112	0,06
40 3M 15	2F	Al	40	38,20	37,44	42,0	28,0		20,0	30,0	6	113	0,08
44 3M 15	2F	Al	44	42,02	41,26	48,0	33,0		20,0	30,0	6	114	0,10
48 3M 15	2	Al	48	45,84	45,08		33,0		20,0	30,0	8		0,10
60 3M 15	2	Al	60	57,30	56,54		33,0		20,0	30,0	8		0,15
72 3M 15	2	Al	72	68,76	68,00		33,0		20,0	30,0	8		0,21

PULEGGE DENTATE PER CINGHIE SYNCHROBELT® - “HTD” SYNCHROBELT® “HTD” TIMING BELT PULLEYS

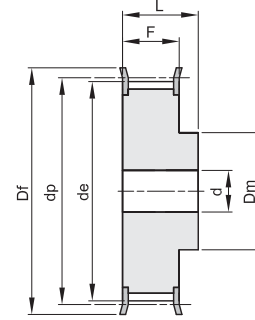
5M

PASSO 5 mm

PER CINGHIE LARGHEZZA 9 mm



2



2F

Materiale: Acciaio (St)

Materiale: Alluminio UNI 9006 - T6 (Al)

adatto per l'ossidazione dura a spessore

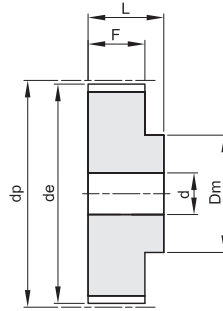
codice	tipo	materiale	denti	dp	de	Df	Dm	Di	F	L	d	n° flangia	Kg.
12 5M 09	2F	St	12	19,10	17,96	23	12,5		14,5	20,0	6	202	0,03
14 5M 09	2F	St	14	22,28	21,14	25	13,5		14,5	20,0	6	203	0,04
15 5M 09	2F	St	15	23,87	22,73	28	16,0		14,5	20,0	6	204	0,05
16 5M 09	2F	St	16	25,46	24,32	28	16,5		14,5	20,0	6	204	0,06
18 5M 09	2F	St	18	28,65	27,51	32	20,0		14,5	20,0	6	205	0,07
20 5M 09	2F	St	20	31,83	30,69	36	23,0		14,5	22,5	6	206	0,10
21 5M 09	2F	St	21	33,42	32,28	38	24,0		14,5	22,5	6	207	0,12
22 5M 09	2F	St	22	35,01	33,87	38	25,5		14,5	22,5	6	207	0,13
24 5M 09	2F	St	24	38,20	37,06	42	27,0		14,5	22,5	6	208	0,15
26 5M 09	2F	St	26	41,38	40,24	44	30,0		14,5	22,5	6	209	0,18
28 5M 09	2F	St	28	44,56	43,42	48	30,5		14,5	22,5	6	210	0,21
30 5M 09	2F	St	30	47,75	46,60	51	35,0		14,5	22,5	6	211	0,25
32 5M 09	2F	St	32	50,93	49,79	54	38,0		14,5	22,5	8	212	0,28
36 5M 09	2F	St	36	57,30	56,16	60	38,0		14,5	22,5	8	214	0,33
40 5M 09	2F	St	40	63,66	62,52	71	38,0		14,5	22,5	8	217	0,42
44 5M 09	2	Al	44	70,03	68,89		38,0		14,5	25,5	8		0,17
48 5M 09	2	Al	48	76,39	75,25		45,0		14,5	25,5	8		0,18
60 5M 09	2	Al	60	95,49	94,35		45,0		14,5	25,5	8		0,23
72 5M 09	2	Al	72	114,59	113,45		45,0		14,5	25,5	8		0,42

PULEGGE DENTATE PER CINGHIE SYNCHROBELT® - "HTD" SYNCHROBELT® "HTD" TIMING BELT PULLEYS

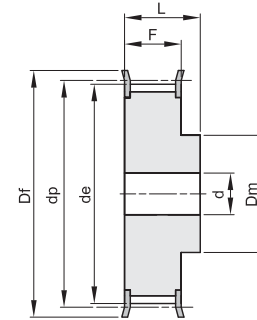
5M

PASSO 5 mm

PER CINGHIE LARGHEZZA 15 mm



2



2F

Materiale: Acciaio (St)

Materiale: Alluminio UNI 9006 - T6 (Al)

adatto per l'ossidazione dura a spessore

codice	tipo	materiale	denti	dp	de	Df	Dm	Di	F	L	d	n° flangia	Kg.
12 5M 15	2F	St	12	19,10	17,96	23	12,5		20,5	26	6	202	0,03
14 5M 15	2F	St	14	22,28	21,14	25	13,5		20,5	26	6	203	0,04
15 5M 15	2F	St	15	23,87	22,73	28	16,0		20,5	26	6	204	0,05
16 5M 15	2F	St	16	25,46	24,32	28	16,5		20,5	26	6	204	0,06
18 5M 15	2F	St	18	28,65	27,51	32	20,0		20,5	26	6	205	0,09
20 5M 15	2F	St	20	31,83	30,69	36	23,0		20,5	26	6	206	0,12
21 5M 15	2F	St	21	33,42	32,28	38	24,0		20,5	26	6	207	0,14
22 5M 15	2F	St	22	35,01	33,87	38	25,5		20,5	26	6	207	0,15
24 5M 15	2F	St	24	38,20	37,06	42	27,0		20,5	28	6	208	0,19
26 5M 15	2F	St	26	41,38	40,24	44	30,0		20,5	28	6	209	0,23
28 5M 15	2F	St	28	44,56	43,42	48	30,5		20,5	28	6	210	0,26
30 5M 15	2F	St	30	47,75	46,60	51	35,0		20,5	28	6	211	0,32
32 5M 15	2F	St	32	50,93	49,79	54	38,0		20,5	28	8	212	0,35
36 5M 15	2F	St	36	57,30	56,16	60	38,0		20,5	28	8	214	0,43
40 5M 15	2F	St	40	63,66	62,52	71	38,0		20,5	28	8	217	0,52
44 5M 15	2	Al	44	70,03	68,89		38,0		20,5	30	8		0,23
48 5M 15	2	Al	48	76,39	75,25		38,0		20,5	30	8		0,29
60 5M 15	2	Al	60	95,49	94,35		50,0		20,5	30	8		0,30
72 5M 15	2	Al	72	114,59	113,45		50,0		20,5	30	8		0,59

PULEGGE DENTATE PER CINGHIE SYNCHROBELT® - “HTD” SYNCHROBELT® “HTD” TIMING BELT PULLEYS

5M

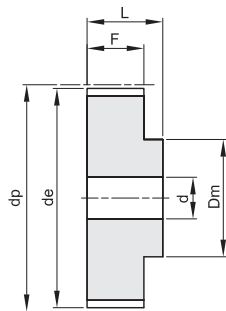
PASSO 5 mm

PER CINGHIE LARGHEZZA 25 mm

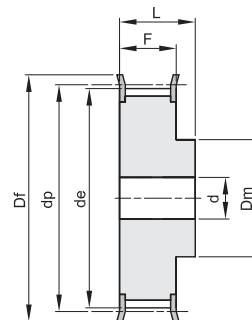
Materiale: Acciaio (St)

Materiale: Alluminio UNI 9006 - T6 (Al)

adatto per l'ossidazione dura a spessore



2



2F

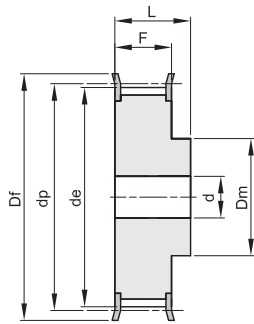
codice	tipo	materiale	denti	dp	de	Df	Dm	Di	F	L	d	n° flangia	Kg.
12 5M 25	2F	St	12	19,10	17,96	23	12,5		30,5	36	6	202	0,05
14 5M 25	2F	St	14	22,28	21,14	25	13,5		30,5	36	6	203	0,08
15 5M 25	2F	St	15	23,87	22,73	28	16,0		30,5	36	6	204	0,09
16 5M 25	2F	St	16	25,46	24,32	28	16,5		30,5	36	6	204	0,11
18 5M 25	2F	St	18	28,65	27,51	32	20,0		30,5	36	6	205	0,13
20 5M 25	2F	St	20	31,83	30,69	36	23,0		30,5	36	6	206	0,17
21 5M 25	2F	St	21	33,42	32,28	38	24,0		30,5	38	6	207	0,20
22 5M 25	2F	St	22	35,01	33,87	38	25,5		30,5	38	6	207	0,22
24 5M 25	2F	St	24	38,20	37,06	42	27,0		30,5	38	6	208	0,26
26 5M 25	2F	St	26	41,38	40,24	44	30,0		30,5	38	6	209	0,32
28 5M 25	2F	St	28	44,56	43,42	48	30,5		30,5	38	6	210	0,37
30 5M 25	2F	St	30	47,75	46,60	51	35,0		30,5	38	6	211	0,44
32 5M 25	2F	St	32	50,93	49,79	54	38,0		30,5	38	8	212	0,48
36 5M 25	2F	St	36	57,30	56,16	60	38,0		30,5	38	8	214	0,59
40 5M 25	2F	St	40	63,66	62,52	71	38,0		30,5	38	8	217	0,75
44 5M 25	2	Al	44	70,03	68,89		38,0		30,5	40	8		0,32
48 5M 25	2	Al	48	76,39	75,25		38,0		30,5	40	8		0,28
60 5M 25	2	Al	60	95,49	94,35		50,0		30,5	40	8		0,44
72 5M 25	2	Al	72	114,59	113,45		50,0		30,5	40	8		0,85

PULEGGE DENTATE PER CINGHIE SYNCHROBELT® - "HTD" SYNCHROBELT® "HTD" TIMING BELT PULLEYS

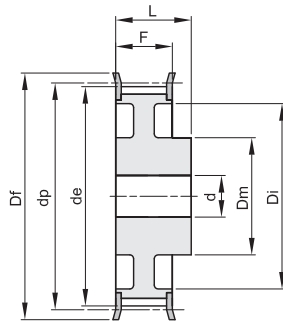
8M

PASSO 8 mm

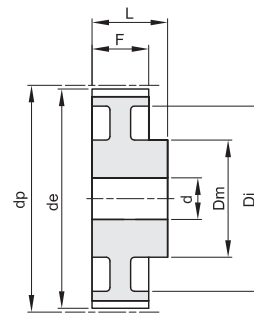
PER CINGHIE LARGHEZZA 20 mm



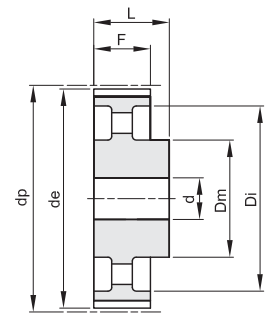
2F



3F



3



4

Materiale: Acciaio (St)

Materiale: Ghisa (GG)

codice	tipo	materiale	denti	dp	de	Df	Dm	Di	F	L	d	n° flangia	Kg.
22 8M 20	2F	St	22	56,02	54,65	60	43		28	38	12	308	0,54
24 8M 20	2F	St	24	61,11	59,74	66	45		28	38	12	310	0,65
26 8M 20	2F	St	26	66,21	64,84	71	48		28	38	12	311	0,80
28 8M 20	2F	St	28	71,30	70,08	75	50		28	38	14	312	0,88
30 8M 20	2F	St	30	76,39	75,13	83	55		28	38	14	314	1,00
32 8M 20	2F	St	32	81,49	80,16	87	60		28	38	14	315	1,20
34 8M 20	2F	St	34	86,58	85,21	91	66		28	38	14	316	1,40
36 8M 20	2F	St	36	91,67	90,30	98	70		28	38	14	319	1,60
38 8M 20	2F	St	38	96,77	95,39	103	75		28	38	14	320	1,70
40 8M 20	2F	St	40	101,86	100,49	106	75		28	38	14	321	1,85
44 8M 20	2F	St	44	112,05	110,67	119	75		28	38	14	325	2,10
48 8M 20	2F	St	48	122,23	120,86	127	75		28	38	14	327	2,50
56 8M 20	3F	St	56	142,60	141,23	148	80	116	28	38	14	333	2,82
64 8M 20	3F	St	64	162,97	161,60	168	80	137	28	38	14	338	3,22
72 8M 20	3F	St	72	183,35	181,97	192	80	158	28	38	14	340	3,74
80 8M 20	3	GG	80	203,72	202,35		90	180	28	38	14		3,78
90 8M 20	3	GG	90	229,18	227,81		90	204	28	38	14		4,57
* 112 8M 20	4	GG	112	285,21	283,83		90	254	28	38	18		
* 144 8M 20	4	GG	144	366,69	365,32		90	336	28	38	20		
* 168 8M 20	4	GG	168	427,81	426,44		100	400	28	38	20		
* 192 8M 20	4	GG	192	488,92	487,55		100	460	28	38	20		

* Costruite a richiesta - Manufactured on request.

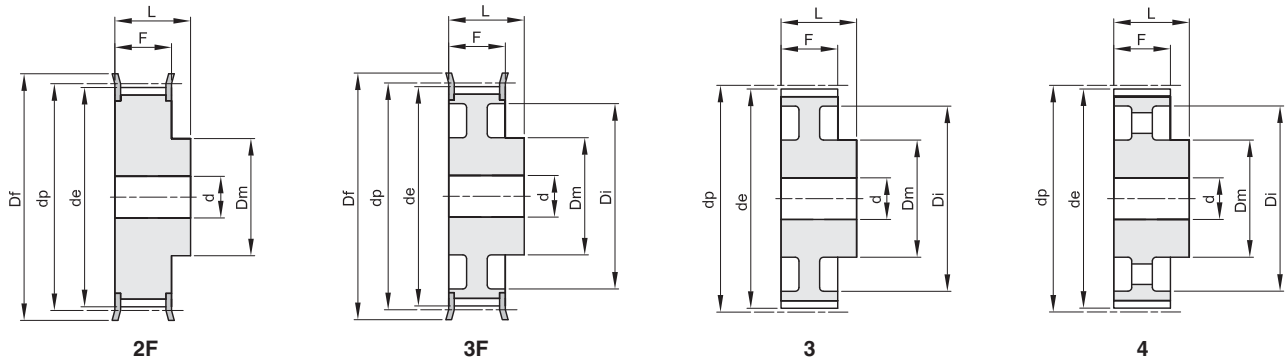
PULEGGE DENTATE PER CINGHIE SYNCHROBELT® - “HTD”

SYNCHROBELT® “HTD” TIMING BELT PULLEYS

8M

PASSO 8 mm

PER CINGHIE LARGHEZZA 30 mm



Materiale: Acciaio (St)
Materiale: Ghisa (GG)

codice	tipo	materiale	denti	dp	de	Df	Dm	Di	F	L	d	n° flangia	Kg.
22 8M 30	2F	St	22	56,02	54,65	60	43		38	48	12	308	0,75
24 8M 30	2F	St	24	61,11	59,74	66	45		38	48	12	310	0,90
26 8M 30	2F	St	26	66,21	64,84	71	48		38	48	12	311	1,10
28 8M 30	2F	St	28	71,30	70,08	75	50		38	48	14	312	1,20
30 8M 30	2F	St	30	76,39	75,13	83	55		38	48	14	314	1,32
32 8M 30	2F	St	32	81,49	80,16	87	60		38	48	14	315	1,55
34 8M 30	2F	St	34	86,58	85,21	91	66		38	48	14	316	1,80
36 8M 30	2F	St	36	91,67	90,30	98	70		38	48	14	319	2,10
38 8M 30	2F	St	38	96,77	95,39	103	75		38	48	14	320	2,30
40 8M 30	2F	St	40	101,86	100,49	106	75		38	48	14	321	2,47
44 8M 30	2F	St	44	112,05	110,67	119	75		38	48	14	325	2,95
48 8M 30	2F	St	48	122,23	120,86	127	75		38	48	14	327	3,30
56 8M 30	3F	St	56	142,60	141,23	148	90	116	38	48	14	333	4,02
64 8M 30	3F	St	64	162,97	161,60	168	90	137	38	48	14	338	4,60
72 8M 30	3F	St	72	183,35	181,97	192	95	158	38	48	14	340	5,41
80 8M 30	3	GG	80	203,72	202,35		100	180	38	48	14		5,23
90 8M 30	3	GG	90	229,18	227,81		100	204	38	48	14		6,42
112 8M 30	4	GG	112	285,21	283,83		100	254	38	48	18		8,12
144 8M 30	4	GG	144	366,69	365,32		100	336	38	48	20		10,36
168 8M 30	4	GG	168	427,81	426,44		100	400	38	48	20		12,37
192 8M 30	4	GG	192	488,92	487,55		100	460	38	48	20		14,31

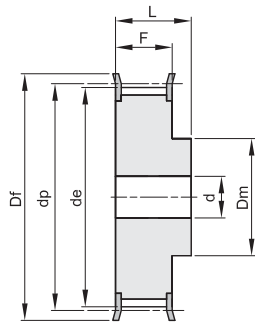
PULEGGE DENTATE PER CINGHIE SYNCHROBELT® - "HTD"

SYNCHROBELT® "HTD" TIMING BELT PULLEYS

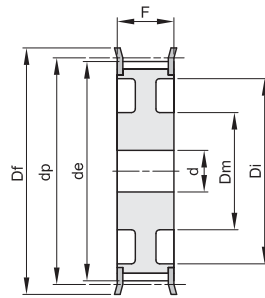
8M

PASSO 8 mm

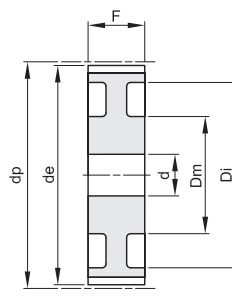
PER CINGHIE LARGHEZZA 50 mm



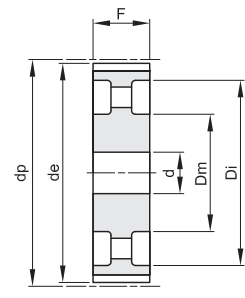
2F



7F



7



8

Materiale: Acciaio (St)

Materiale: Ghisa (GG)

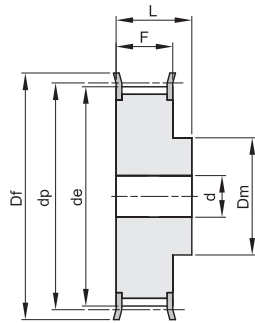
codice	tipo	materiale	denti	dp	de	Df	Dm	Di	F	L	d	n° flangia	Kg.
22 8M 50	2F	St	22	56,02	54,65	60	43		60	70	12	308	1,10
24 8M 50	2F	St	24	61,11	59,74	66	45		60	70	12	310	1,30
26 8M 50	2F	St	26	66,21	64,84	71	48		60	70	12	311	1,60
28 8M 50	2F	St	28	71,30	70,08	75	50		60	70	14	312	1,70
30 8M 50	2F	St	30	76,39	75,13	83	55		60	70	14	314	2,00
32 8M 50	2F	St	32	81,49	80,16	87	60		60	70	14	315	2,35
34 8M 50	2F	St	34	86,58	85,21	91	66		60	70	14	316	2,80
36 8M 50	2F	St	36	91,67	90,30	98	70		60	70	14	319	3,10
38 8M 50	2F	St	38	96,77	95,39	103	75		60	70	14	320	3,30
40 8M 50	2F	St	40	101,86	100,49	106	75		60	70	14	321	3,60
44 8M 50	2F	St	44	112,05	110,67	119	75		60	70	14	325	4,40
48 8M 50	2F	St	48	122,23	120,86	127	75		60	70	14	327	5,00
56 8M 50	7F	St	56	142,60	141,23	148	90	116	60	60	18	333	5,68
64 8M 50	7F	St	64	162,97	161,60	168	100	137	60	60	18	338	6,93
72 8M 50	7F	St	72	183,35	181,97	192	100	158	60	60	18	340	7,95
80 8M 50	7	GG	80	203,72	202,35		110	180	60	60	18		7,96
90 8M 50	7	GG	90	229,18	227,81		110	204	60	60	18		9,20
112 8M 50	8	GG	112	285,21	283,83		110	254	60	60	18		12,16
144 8M 50	8	GG	144	366,69	365,32		110	336	60	60	20		15,68
168 8M 50	8	GG	168	427,81	426,44		120	400	60	60	20		18,99
192 8M 50	8	GG	192	488,92	487,55		130	460	60	60	20		24,09

PULEGGE DENTATE PER CINGHIE SYNCHROBELT® - "HTD" SYNCHROBELT® "HTD" TIMING BELT PULLEYS

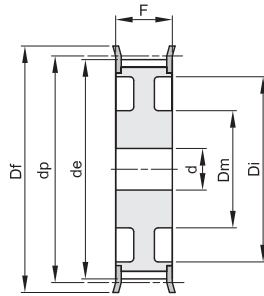
8M

PASSO 8 mm

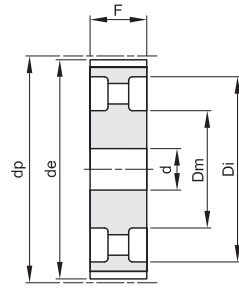
PER CINGHIE LARGHEZZA 85 mm



2F



7F



8

Materiale: Acciaio (St)

Materiale: Ghisa (GG)

codice	tipo	materiale	denti	dp	de	Df	Dm	Di	F	L	d	n° flangia	Kg.
22 8M 85	2F	St	22	56,02	54,65	60	43		95	105	12	308	1,60
24 8M 85	2F	St	24	61,11	59,74	66	45		95	105	12	310	1,95
26 8M 85	2F	St	26	66,21	64,84	71	48		95	105	12	311	2,30
28 8M 85	2F	St	28	71,30	70,08	75	50		95	105	14	312	2,60
30 8M 85	2F	St	30	76,39	75,13	83	55		95	105	14	314	3,10
32 8M 85	2F	St	32	81,49	80,16	87	60		95	105	14	315	3,70
34 8M 85	2F	St	34	86,58	85,21	91	66		95	105	14	316	4,00
36 8M 85	2F	St	36	91,67	90,30	98	70		95	105	14	319	4,70
38 8M 85	2F	St	38	96,77	95,39	103	75		95	105	14	320	5,10
40 8M 85	2F	St	40	101,86	100,49	106	75		95	105	14	321	5,40
44 8M 85	2F	St	44	112,05	110,67	119	75		95	105	14	325	6,70
48 8M 85	2F	St	48	122,23	120,86	127	75		95	105	14	327	7,20
56 8M 85	2F	St	56	142,60	141,23	148	80		95	105	18	333	11,48
64 8M 85	7F	St	64	162,97	161,60	168	100	137	95	95	18	338	11,02
72 8M 85	7F	St	72	183,35	181,97	192	110	158	95	95	18	340	13,45
80 8M 85	8	GG	80	203,72	202,35		110	180	95	95	20		12,36
90 8M 85	8	GG	90	229,18	227,81		110	204	95	95	20		14,38
112 8M 85	8	GG	112	285,21	283,83		110	254	95	95	24		18,66
144 8M 85	8	GG	144	366,69	365,32		110	341	95	95	24		23,00
* 168 8M 85	8	GG	168	427,81	426,44		120	400	95	95	24		
* 192 8M 85	8	GG	192	488,92	487,55		130	460	95	95	24		

* Costruite a richiesta - Manufactured on request.

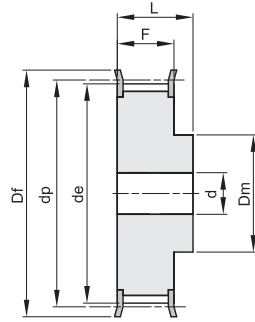
PULEGGE DENTATE PER CINGHIE SYNCHROBELT® - "HTD" SYNCHROBELT® "HTD" TIMING BELT PULLEYS

14M

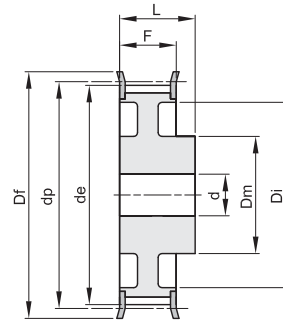
PASSO 14 mm

PER CINGHIE LARGHEZZA 40 mm

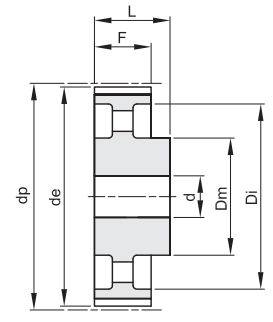
Materiale: Acciaio (St)
Materiale: Ghisa (GG)



2F



3F



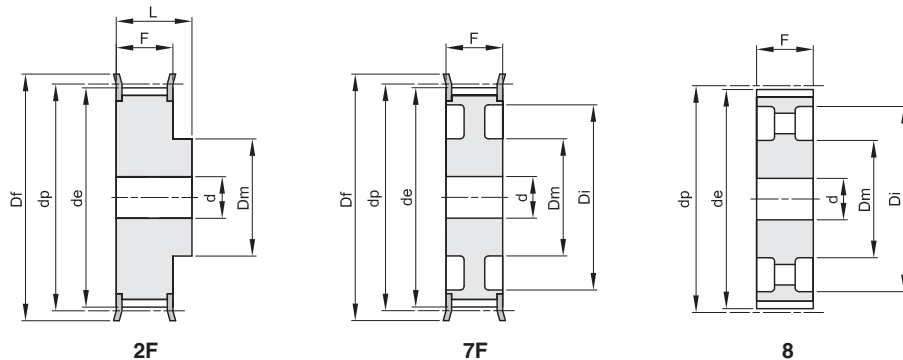
4

codice	tipo	materiale	denti	dp	de	Df	Dm	Di	F	L	d	n° flangia	Kg.
28 14M 40	2F	St	28	124,78	122,12	127	100		54	69	24	400	4,80
30 14M 40	2F	St	30	133,69	130,99	138	100		54	69	24	401	5,60
32 14M 40	2F	St	32	142,60	139,88	154	100		54	69	24	403	6,20
34 14M 40	2F	St	34	151,52	148,79	160	100		54	69	24	404	6,90
36 14M 40	2F	St	36	160,43	157,68	168	100		54	69	24	405	7,70
38 14M 40	2F	St	38	169,34	166,60	183	120		54	69	24	406	8,90
40 14M 40	2F	St	40	178,25	175,49	188	120		54	69	24	407	9,80
44 14M 40	2F	St	44	196,08	193,28	211	120		54	69	24	411	12,00
48 14M 40	3F	GG	48	213,90	211,11	226	135	170	54	69	24	412	11,98
56 14M 40	3F	GG	56	249,55	246,76	256	135	207	54	69	28	416	14,01
64 14M 40	3F	GG	64	285,21	282,41	296	135	240	54	69	28	418	16,65
72 14M 40	4	GG	72	320,86	318,06		135	278	54	69	28		15,52
80 14M 40	4	GG	80	356,51	353,71		135	314	54	69	28		17,23
90 14M 40	4	GG	90	401,07	398,28		135	358	54	69	28		19,40
112 14M 40	4	GG	112	499,11	496,32		135	456	54	69	28		24,14
* 144 14M 40	4	GG	144	641,71	638,92		135	600	54	69	28		
* 168 14M 40	4	GG	168	748,66	745,87		135	706	54	69	28		
* 192 14M 40	4	GG	192	855,62	852,82		135	813	54	69	28		

* Costruite a richiesta - Manufactured on request.

PULEGGE DENTATE PER CINGHIE SYNCHROBELT® - “HTD” SYNCHROBELT® “HTD” TIMING BELT PULLEYS

14M
PASSO 14 mm
PER CINGHIE LARGHEZZA 55 mm

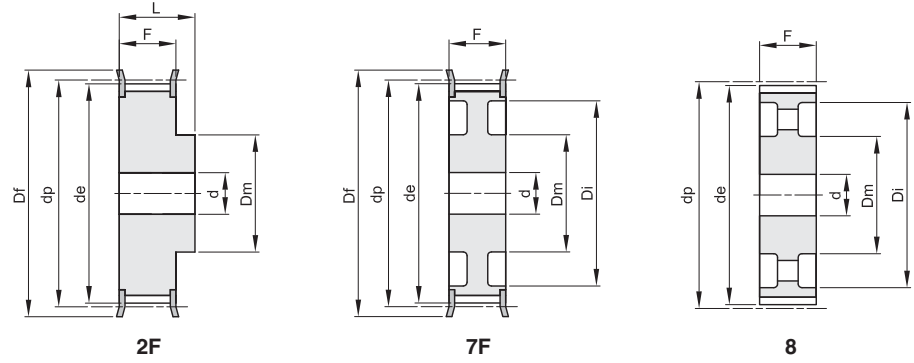


Materiale: Acciaio (St)
Materiale: Ghisa (GG)

codice	tipo	materiale	denti	dp	de	Df	Dm	Di	F	L	d	n° flangia	Kg.
28 14M 55	2F	St	28	124,78	122,12	127	100		70	85	24	400	5,70
30 14M 55	2F	St	30	133,69	130,99	138	100		70	85	24	401	7,10
32 14M 55	2F	St	32	142,60	139,88	154	100		70	85	24	403	7,90
34 14M 55	2F	St	34	151,52	148,79	160	100		70	85	24	404	9,33
36 14M 55	2F	St	36	160,43	157,68	168	100		70	85	24	405	10,49
38 14M 55	2F	St	38	169,34	166,60	183	120		70	85	24	406	12,11
40 14M 55	2F	St	40	178,25	175,49	188	120		70	85	24	407	13,30
44 14M 55	2F	St	44	196,08	193,28	211	120		70	85	24	411	16,12
48 14M 55	7F	GG	48	213,90	211,11	226	135	170	70	70	24	412	13,50
56 14M 55	7F	GG	56	249,55	246,76	256	135	207	70	70	28	416	15,78
64 14M 55	7F	GG	64	285,21	282,41	296	135	240	70	70	28	418	19,04
72 14M 55	8	GG	72	320,86	318,06		135	278	70	70	28		18,41
80 14M 55	8	GG	80	356,51	353,71		135	314	70	70	28		20,27
90 14M 55	8	GG	90	401,07	398,28		135	358	70	70	28		22,98
112 14M 55	8	GG	112	499,11	496,32		135	456	70	70	28		29,29
144 14M 55	8	GG	144	641,71	638,92		135	600	70	70	28		36,00
168 14M 55	8	GG	168	748,66	745,87		135	706	70	70	28		40,00
192 14M 55	8	GG	192	855,62	852,82		135	813	70	70	28		47,50

PULEGGE DENTATE PER CINGHIE SYNCHROBELT® - "HTD" SYNCHROBELT® "HTD" TIMING BELT PULLEYS

14M
PASSO 14 mm
PER CINGHIE LARGHEZZA 85 mm

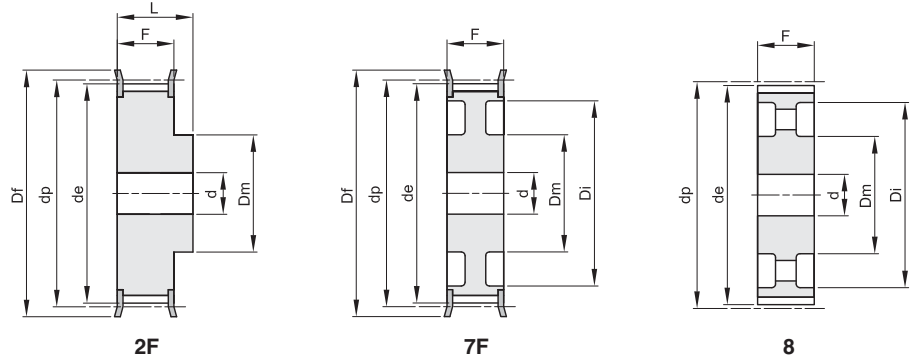


Materiale: Acciaio (St)
Materiale: Ghisa (GG)

codice	tipo	materiale	denti	dp	de	Df	Dm	Di	F	L	d	n° flangia	Kg.
28 14M 85	2F	St	28	124,78	122,12	127	100		102	117	24	400	8,77
30 14M 85	2F	St	30	133,69	130,99	138	100		102	117	24	401	10,13
32 14M 85	2F	St	32	142,60	139,88	154	100		102	117	24	403	11,65
34 14M 85	2F	St	34	151,52	148,79	160	100		102	117	24	404	13,15
36 14M 85	2F	St	36	160,43	157,68	168	100		102	117	32	405	14,48
38 14M 85	2F	St	38	169,34	166,60	183	120		102	117	32	406	16,62
40 14M 85	2F	St	40	178,25	175,49	188	135		102	117	32	407	18,84
44 14M 85	2F	St	44	196,08	193,28	211	135		102	117	32	411	22,86
48 14M 85	2F	St	48	213,90	211,11	226	150		102	117	32	412	27,58
56 14M 85	7F	GG	56	249,55	246,76	256	150	207	102	102	32	416	24,19
64 14M 85	7F	GG	64	285,21	282,41	296	150	240	102	102	32	418	28,57
72 14M 85	8	GG	72	320,86	318,06		150	278	102	102	32		28,26
80 14M 85	8	GG	80	356,51	353,71		150	314	102	102	32		31,00
90 14M 85	8	GG	90	401,07	398,28		150	358	102	102	32		35,00
112 14M 85	8	GG	112	499,11	496,32		150	456	102	102	32		43,50
144 14M 85	8	GG	144	641,71	638,92		150	600	102	102	32		50,00
168 14M 85	8	GG	168	748,66	745,87		150	706	102	102	32		63,00
192 14M 85	8	GG	192	855,62	852,82		165	813	102	102	32		76,00

PULEGGE DENTATE PER CINGHIE SYNCHROBELT® - “HTD” SYNCHROBELT® “HTD” TIMING BELT PULLEYS

14M
PASSO 14 mm
PER CINGHIE LARGHEZZA 115 mm

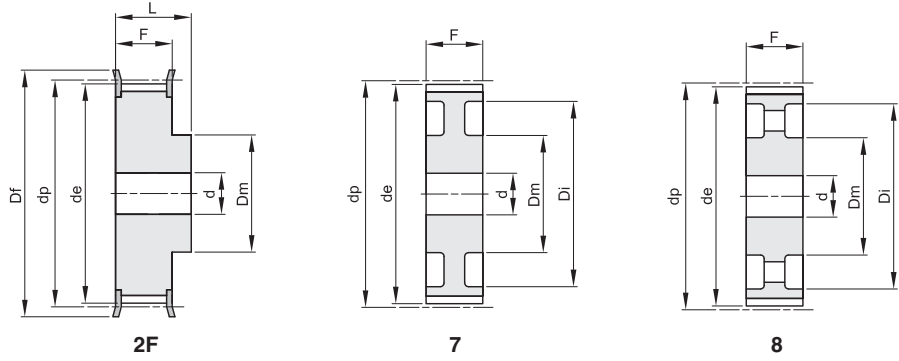


Materiale: Acciaio (St)
Materiale: Ghisa (GG)

codice	tipo	materiale	denti	dp	de	Df	Dm	Di	F	L	d	n° flangia	Kg.
28 14M 115	2F	St	28	124,78	122,12	127	100		133	148	32	400	10,75
30 14M 115	2F	St	30	133,69	130,99	138	100		133	148	32	401	12,52
32 14M 115	2F	St	32	142,60	139,88	154	100		133	148	32	403	14,48
34 14M 115	2F	St	34	151,52	148,79	160	100		133	148	32	404	16,45
36 14M 115	2F	St	36	160,43	157,68	168	120		133	148	32	405	18,99
38 14M 115	2F	St	38	169,34	166,60	183	120		133	148	32	406	21,31
40 14M 115	2F	St	40	178,25	175,49	188	135		133	148	32	407	24,04
44 14M 115	2F	St	44	196,08	193,28	211	140		133	148	32	411	29,41
48 14M 115	2F	St	48	213,90	211,11	226	150		133	148	32	412	35,00
56 14M 115	2F	St	56	249,55	246,76	256	150		133	148	32	416	48,00
64 14M 115	7F	GG	64	285,21	282,41	296	150	240	133	133	32	418	36,00
72 14M 115	8	GG	72	320,86	318,06		150	278	133	133	32		36,00
80 14M 115	8	GG	80	356,51	353,71		150	314	133	133	32		40,00
90 14M 115	8	GG	90	401,07	398,28		150	358	133	133	32		45,00
112 14M 115	8	GG	112	499,11	496,32		150	456	133	133	32		55,50
144 14M 115	8	GG	144	641,71	638,92		165	600	133	133	32		71,00
168 14M 115	8	GG	168	748,66	745,87		165	706	133	133	32		83,00
192 14M 115	8	GG	192	855,62	852,82		165	813	133	133	32		96,00

PULEGGE DENTATE PER CINGHIE SYNCHROBELT® - "HTD" SYNCHROBELT® "HTD" TIMING BELT PULLEYS

14M
PASSO 14 mm
PER CINGHIE LARGHEZZA 170 mm



Materiale: Acciaio (St)
Materiale: Ghisa (GG)

codice	tipo	materiale	denti	dp	de	Df	Dm	Di	F	L	d	n° flangia	Kg.
28 14M 170	2F	St	28	124,78	122,12	127	100		187	202	32	400	14,79
30 14M 170	2F	St	30	133,69	130,99	138	100		187	202	32	401	17,24
32 14M 170	2F	St	32	142,60	139,88	154	100		187	202	32	403	19,92
34 14M 170	2F	St	34	151,52	148,79	160	100		187	202	32	404	22,72
36 14M 170	2F	St	36	160,43	157,68	168	120		187	202	32	405	26,07
38 14M 170	2F	St	38	169,34	166,60	183	135		187	202	32	406	29,71
40 14M 170	2F	St	40	178,25	175,49	188	140		187	202	32	407	33,50
*44 14M 170	2F	St	44	196,08	193,28	211	160		187	202	32	411	
*48 14M 170	2F	St	48	213,90	211,11	226	160		187	202	32	412	
*56 14M 170	2F	St	56	249,55	246,76	256	160		187	202	32	416	
*64 14M 170	2F	St	64	285,21	282,41	296	180		187	202	32	418	
*72 14M 170	7	GG	72	320,86	318,06		180	278	187	187	32		
80 14M 170	7	GG	80	356,51	353,71		180	314	187	187	32		71,00
90 14M 170	8	GG	90	401,07	398,28		180	358	187	187	38		73,00
112 14M 170	8	GG	112	499,11	496,32		200	456	187	187	38		95,00
144 14M 170	8	GG	144	641,71	638,92		220	600	187	187	38		114,00
168 14M 170	8	GG	168	748,66	745,87		220	706	187	187	38		142,00
*192 14M 170	8	GG	192	855,62	852,82		220	813	187	187	38		

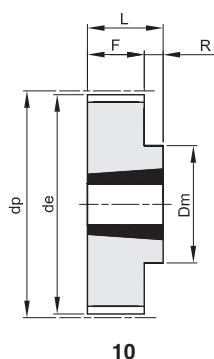
* Costruite su richiesta - Manufactured on request.

PULEGGE DENTATE A BUSSOLA CONICA PER CINGHIE SYNCHROBELT® - "HTD" SYNCHROBELT® "HTD" TIMING BELT PULLEYS FOR TAPER BUSHES

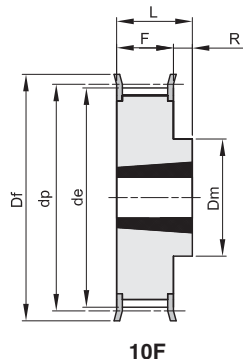
5M

PASSO 5 mm

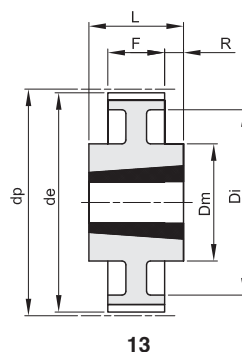
PER CINGHIE LARGHEZZA 15 mm



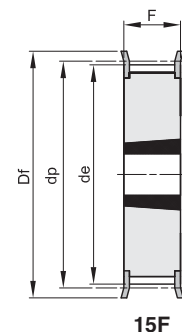
10



10F



13



15F

Materiale: Acciaio (St)

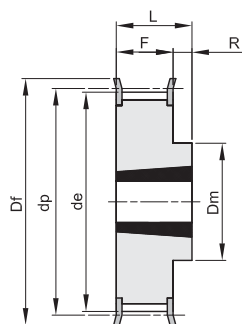
codice	tipo	materiale	denti	bussola	foro max	dp	de	Df	Dm	Di	F	L	R	n° flangia	Kg.
TL 34 5M 15	15F	St	34	1008	25	54,11	52,97	57			22	22		213	0,20
TL 36 5M 15	15F	St	36	1108	25	57,30	56,15	60			22	22		214	0,25
TL 38 5M 15	15F	St	38	1108	25	60,48	59,34	66			22	22		216	0,30
TL 40 5M 15	15F	St	40	1108	25	63,66	62,52	71			22	22		217	0,35
TL 44 5M 15	15F	St	44	1108	25	70,03	68,89	75			22	22		218	0,40
TL 48 5M 15	10F	St	48	1210	32	76,39	75,25	83	59		22	25	3	219	0,46
TL 56 5M 15	10F	St	56	1210	32	89,13	87,99	93	70		22	25	3	222	0,60
TL 64 5M 15	10F	St	64	1210	32	101,86	100,72	106	80		22	25	3	224	0,80
TL 72 5M 15	10	St	72	1610	42	114,59	113,45		92		22	25	3		1,20
TL 80 5M 15	10	St	80	1610	42	127,32	126,18		92		22	25	3		1,76
TL 90 5M 15	10	St	90	1610	42	143,24	142,10		92		22	25	3		2,32
TL112 5M 15	10	St	112	2012	50	178,25	177,11		110		20	32	12		3,72
TL136 5M 15	13	St	136	2012	50	216,45	215,31		110	199	20	32	6		3,82

PULEGGE DENTATE A BUSSOLA CONICA PER CINGHIE SYNCHROBELT® - "HTD" SYNCHROBELT® "HTD" TIMING BELT PULLEYS FOR TAPER BUSHES

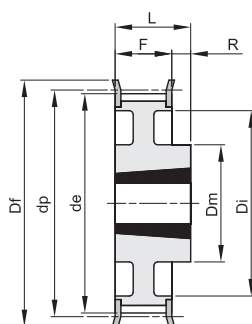
8M

PASSO 8 mm

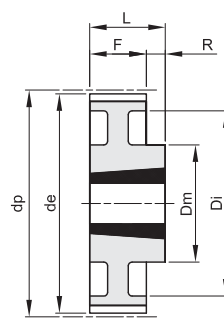
PER CINGHIE LARGHEZZA 20 mm



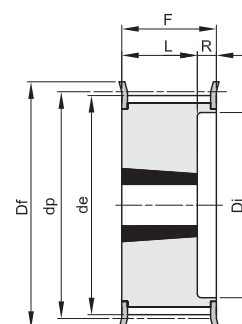
10F



11F



11



16F

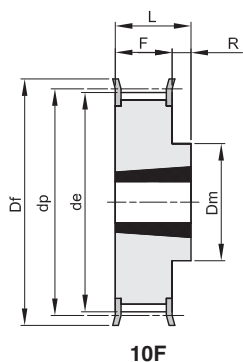
Materiale: Acciaio (St)

Materiale: Ghisa (GG)

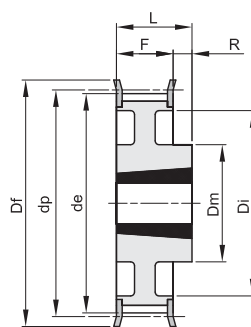
codice	tipo	materiale	denti	bussola	foro max	dp	de	Df	Dm	Di	F	L	R	n° flangia	Kg.
TL 22 8M 20	16F	St	22	1008	25	56,02	54,65	60		37	28	22	6	308	0,25
TL 24 8M 20	16F	St	24	1108	25	61,11	59,74	66		44	28	22	6	310	0,30
TL 26 8M 20	16F	St	26	1108	25	66,21	64,84	71		45	28	22	6	311	0,36
TL 28 8M 20	16F	St	28	1108	25	71,30	70,08	75		50	28	22	6	312	0,45
TL 30 8M 20	16F	St	30	1108	25	76,39	75,13	83		58	28	22	6	314	0,55
TL 32 8M 20	16F	St	32	1610	42	81,49	80,16	87		63	28	25	3	315	0,43
TL 34 8M 20	16F	St	34	1610	42	86,58	85,21	91		64	28	25	3	316	0,57
TL 36 8M 20	16F	St	36	1610	42	91,67	90,30	98		68	28	25	3	319	0,70
TL 38 8M 20	16F	St	38	1610	42	96,77	95,39	103		72	28	25	3	320	0,82
TL 40 8M 20	16F	St	40	1610	42	101,86	100,49	106		76	28	25	3	321	1,10
TL 44 8M 20	10F	St	44	2012	50	112,05	110,67	119	92		28	32	4	325	1,20
TL 48 8M 20	10F	St	48	2012	50	122,23	120,86	127	96		28	32	4	327	1,65
TL 56 8M 20	10F	St	56	2012	50	142,60	141,23	148	110		28	32	4	333	2,50
TL 64 8M 20	11F	St	64	2012	50	162,97	161,60	168	110	137	28	32	4	338	2,60
TL 72 8M 20	11F	St	72	2012	50	183,35	181,97	192	110	158	28	32	4	340	3,40
TL 80 8M 20	11	GG	80	2012	50	203,72	202,35		110	180	28	32	4		3,60
TL 90 8M 20	11	GG	90	2012	50	229,18	227,81		110	204	28	32	4		4,10

PULEGGE DENTATE A BUSSOLA CONICA PER CINGHIE SYNCHROBELT® - "HTD" SYNCHROBELT® "HTD" TIMING BELT PULLEYS FOR TAPER BUSHES

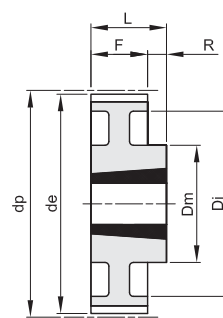
8M
PASSO 8 mm
PER CINGHIE LARGHEZZA 30 mm



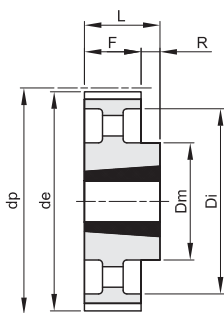
10F



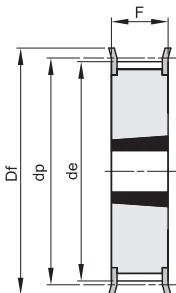
11F



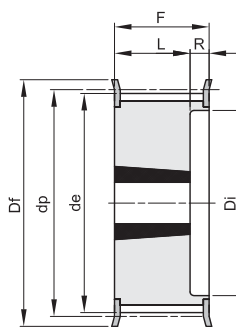
11



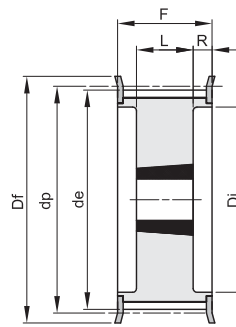
12



15F



16F



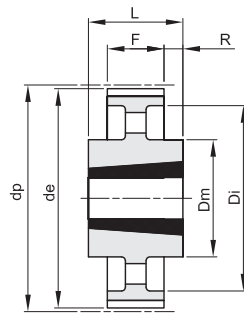
18F

Materiale: Acciaio (St)
Materiale: Ghisa (GG)

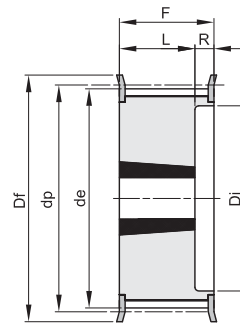
codice	tipo	materiale	denti	bussola	foro max	dp	de	Df	Dm	Di	F	L	R	n° flangia	Kg.
TL 22 8M 30	16F	St	22	1008	25	56,02	54,65	60		37	38	22	16	308	0,33
TL 24 8M 30	16F	St	24	1108	25	61,11	59,74	66		44	38	22	16	310	0,40
TL 26 8M 30	16F	St	26	1108	25	66,21	64,84	71		44	38	22	16	311	0,45
TL 28 8M 30	16F	St	28	1210	32	71,30	70,08	75		50	38	25	13	312	0,50
TL 30 8M 30	15F	St	30	1615	42	76,39	75,13	83			38	38		314	0,55
TL 32 8M 30	15F	St	32	1615	42	81,49	80,16	87			38	38		315	0,60
TL 34 8M 30	15F	St	34	1615	42	86,58	85,21	91			38	38		316	0,80
TL 36 8M 30	15F	St	36	1615	42	91,67	90,30	98			38	38		319	1,00
TL 38 8M 30	15F	St	38	1615	42	96,77	95,39	103			38	38		320	1,10
TL 40 8M 30	15F	St	40	1615	42	101,86	100,49	106			38	38		321	1,34
TL 44 8M 30	18F	St	44	2012	50	112,05	110,67	119		86	38	32	3	325	1,30
TL 48 8M 30	18F	St	48	2012	50	122,23	120,86	127		90	38	32	3	327	1,80
TL 56 8M 30	18F	St	56	2012	50	142,60	141,23	148		110	38	32	3	333	3,80
TL 64 8M 30	10F	St	64	2517	60	162,97	161,60	168	125		38	45	7	338	4,30
TL 72 8M 30	11F	St	72	2517	60	183,35	181,97	192	125	158	38	45	7	340	4,40
TL 80 8M 30	11	GG	80	2517	60	203,72	202,35		125	180	38	45	7		4,65
TL 90 8M 30	11	GG	90	2517	60	229,18	227,81		125	204	38	45	7		5,80
TL112 8M 30	12	GG	112	2517	60	285,21	283,83		125	254	38	45	7		6,20
TL144 8M 30	12	GG	144	2517	60	366,69	365,32		125	336	38	45	7		9,00

PULEGGE DENTATE A BUSSOLA CONICA PER CINGHIE SYNCHROBELT® - "HTD" SYNCHROBELT® "HTD" TIMING BELT PULLEYS FOR TAPER BUSHES

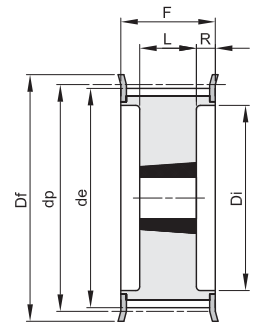
8M
PASSO 8 mm
PER CINGHIE LARGHEZZA 50 mm



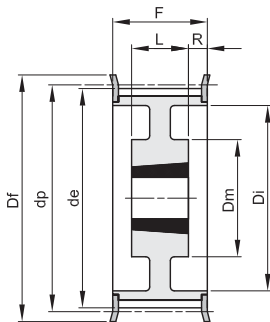
14



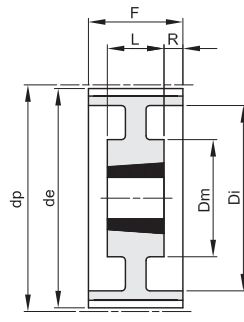
16F



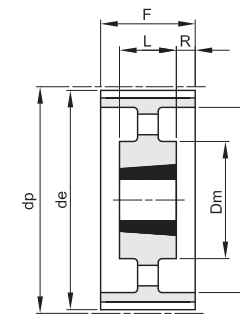
18F



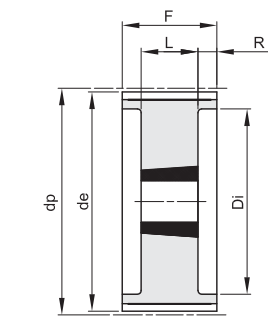
19F



19



20



18

Materiale: Acciaio (St)
Materiale: Ghisa (GG)

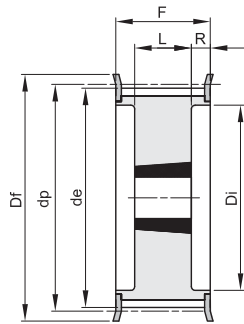
codice	tipo	materiale	denti	bussola	foro max	dp	de	Df	Dm	Di	F	L	R	n° flangia	Kg.
TL 28 8M 50	16F	St	28	1210	32	71,30	70,08	75		50	60	25	35	312	0,60
TL 30 8M 50	16F	St	30	1615	42	76,39	75,13	83		58	60	38	22	314	0,65
TL 32 8M 50	16F	St	32	1615	42	81,49	80,16	87		63	60	38	22	315	0,80
TL 34 8M 50	16F	St	34	1615	42	86,58	85,21	91		65	60	38	22	316	1,08
TL 36 8M 50	16F	St	36	1615	42	91,67	90,30	98		68	60	38	22	319	1,35
TL 38 8M 50	16F	St	38	1615	42	96,77	95,39	103		72	60	38	22	320	1,65
TL 40 8M 50	18F	St	40	2012	50	101,86	100,49	106		80	60	32	14	321	1,70
TL 44 8M 50	18F	St	44	2012	50	112,05	110,67	119		86	60	32	14	325	1,80
TL 48 8M 50	18F	St	48	2012	50	122,23	120,86	127		95	60	32	14	327	2,35
TL 56 8M 50	18F	St	56	2517	60	142,60	141,23	148		116	60	45	7,5	333	3,35
TL 64 8M 50	18F	St	64	2517	60	162,97	161,60	168		136	60	45	7,5	338	4,90
TL 72 8M 50	19F	St	72	2517	60	183,35	181,97	192	125	158	60	45	7,5	340	6,90
TL 80 8M 50	18	GG	80	3020	75	203,72	202,35			180	60	51	4,5		8,90
TL 90 8M 50	19	GG	90	3020	75	229,18	227,81		160	204	60	51	4,5		9,90
TL112 8M 50	19	GG	112	3020	75	285,21	283,83		170	254	60	51	4,5		12,10
TL144 8M 50	20	GG	144	3020	75	366,69	365,32		170	336	60	51	4,5		15,40
TL168 8M 50	14	GG	168	3525	90	427,81	426,44		198	395	60	65	2,5		22,80
TL192 8M 50	14	GG	192	3525	90	488,92	487,55		198	455	60	65	2,5		26,50

PULEGGE DENTATE A BUSSOLA CONICA PER CINGHIE SYNCHROBELT® - "HTD" SYNCHROBELT® "HTD" TIMING BELT PULLEYS FOR TAPER BUSHES

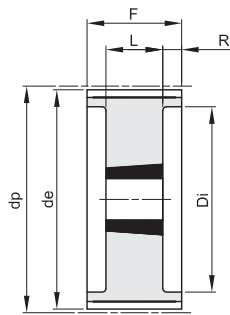
8M

PASSO 8 mm

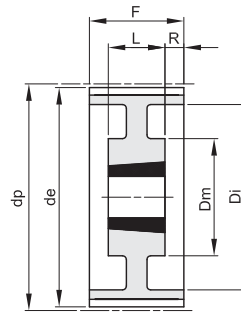
PER CINGHIE LARGHEZZA 85 mm



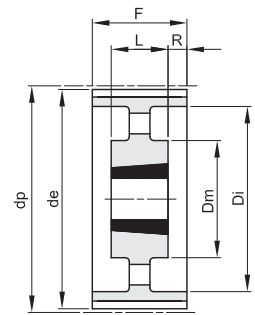
18F



18



19



20

Materiale: Acciaio (St)
Materiale: Ghisa (GG)

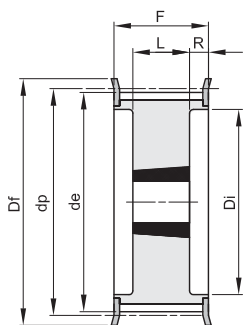
codice	tipo	materiale	denti	bussola	foro max	dp	de	Df	Dm	Di	F	L	R	n° flangia	Kg.
TL 34 8M 85	18F	St	34	1615	42	86,58	85,22	91		65	95	38	28,5	316	1,50
TL 36 8M 85	18F	St	36	1615	42	91,67	90,30	98		68	95	38	28,5	319	1,90
TL 38 8M 85	18F	St	38	1615	42	96,77	95,39	103		72	95	38	28,5	320	2,20
TL 40 8M 85	18F	St	40	2012	50	101,86	100,49	106		80	95	32	31,5	321	1,90
TL 44 8M 85	18F	St	44	2012	50	112,05	110,67	119		86	95	32	31,5	325	2,30
TL 48 8M 85	18F	St	48	2517	60	122,23	120,86	127		97	95	45	25	327	2,70
TL 56 8M 85	18F	St	56	2517	60	142,60	141,23	148		116	95	45	25	333	4,50
TL 64 8M 85	18F	St	64	2517	60	162,97	161,60	168		136	95	45	25	338	6,30
TL 72 8M 85	18F	St	72	3020	75	183,35	181,97	192		150	95	51	22	340	8,10
TL 80 8M 85	18	GG	80	3020	75	203,72	202,35			180	95	51	22		10,20
TL 90 8M 85	19	GG	90	3020	75	229,18	227,81		170	204	95	51	22		11,20
TL112 8M 85	19	GG	112	3020	75	285,21	283,83		170	254	95	51	22		15,00
TL144 8M 85	20	GG	144	3525	90	366,69	365,32		198	336	95	65	15		20,20
TL168 8M 85	20	GG	168	3525	90	427,81	426,44		198	395	95	65	15		22,40
TL192 8M 85	20	GG	192	3525	90	488,92	487,55		198	455	95	65	15		28,20

PULEGGE DENTATE A BUSSOLA CONICA PER CINGHIE SYNCHROBELT® - "HTD" SYNCHROBELT® "HTD" TIMING BELT PULLEYS FOR TAPER BUSHES

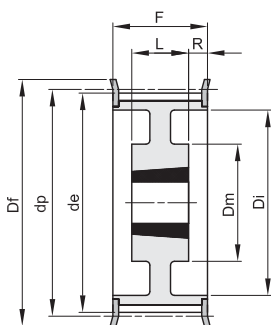
14M

PASSO 14 mm

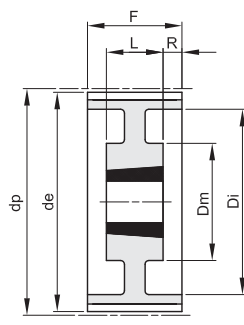
PER CINGHIE LARGHEZZA 40 mm



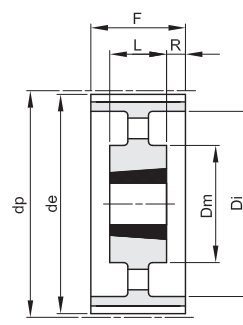
18F



19F



19



20

Materiale: Acciaio (St)

Materiale: Ghisa (GG)

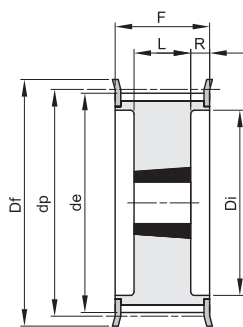
codice	tipo	materiale denti	bussola	foro max	dp	de	Df	Dm	Di	F	L	R	n° flangia	Kg.	
TL 28 14M 40	18F	St	28	2012	50	124,78	122,12	127	94	54	32	11	400	2,10	
TL 30 14M 40	18F	St	30	2012	50	133,69	130,99	138	98	54	32	11	401	2,70	
TL 32 14M 40	18F	St	32	2012	50	142,60	139,88	154	108	54	32	11	403	3,40	
TL 34 14M 40	18F	St	34	2517	60	151,52	148,79	160	110	54	45	4,5	404	3,90	
TL 36 14M 40	18F	St	36	2517	60	160,43	157,68	168	120	54	45	4,5	405	4,80	
TL 38 14M 40	18F	St	38	2517	60	169,34	166,60	183	130	54	45	4,5	406	5,40	
TL 40 14M 40	18F	St	40	2517	60	178,25	175,49	188	138	54	45	4,5	407	6,00	
TL 44 14M 40	18F	St	44	3020	75	196,08	193,28	211	155	54	51	1,5	411	7,50	
TL 48 14M 40	18F	St	48	3020	75	213,90	211,11	226	170	54	51	1,5	412	8,50	
TL 56 14M 40	18F	GG	56	3020	75	249,55	246,76	256	208	54	51	1,5	416	10,10	
TL 64 14M 40	19F	GG	64	3020	75	285,21	282,41	296	170	240	54	51	1,5	418	13,40
TL 72 14M 40	19	GG	72	3020	75	320,86	318,06	170	280	54	51	1,5		15,00	
TL 80 14M 40	20	GG	80	3020	75	356,51	353,71	170	315	54	51	1,5		16,00	
TL 90 14M 40	20	GG	90	3020	75	401,07	398,28	170	360	54	51	1,5		18,00	
TL112 14M 40	20	GG	112	3020	75	499,11	496,32	170	457	54	51	1,5		25,50	
TL144 14M 40	20	GG	144	3020	75	641,71	638,92	170	600	54	51	1,5		32,00	
TL168 14M 40	20	GG	168	3020	75	748,66	745,87	170	706	54	51	1,5		43,50	
TL192 14M 40	20	GG	192	3020	75	855,62	852,82	170	813	54	51	1,5		49,50	

PULEGGE DENTATE A BUSSOLA CONICA PER CINGHIE SYNCHROBELT® - "HTD" SYNCHROBELT® "HTD" TIMING BELT PULLEYS FOR TAPER BUSHES

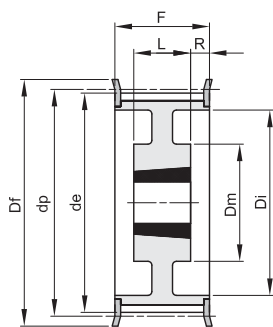
14M

PASSO 14 mm

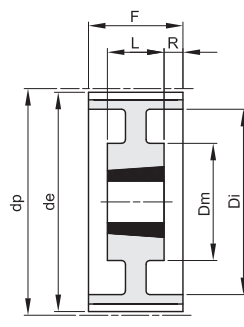
PER CINGHIE LARGHEZZA 55 mm



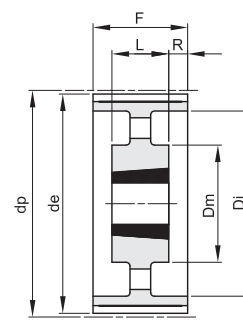
18F



19F



19



20

Materiale: Acciaio (St)
Materiale: Ghisa (GG)

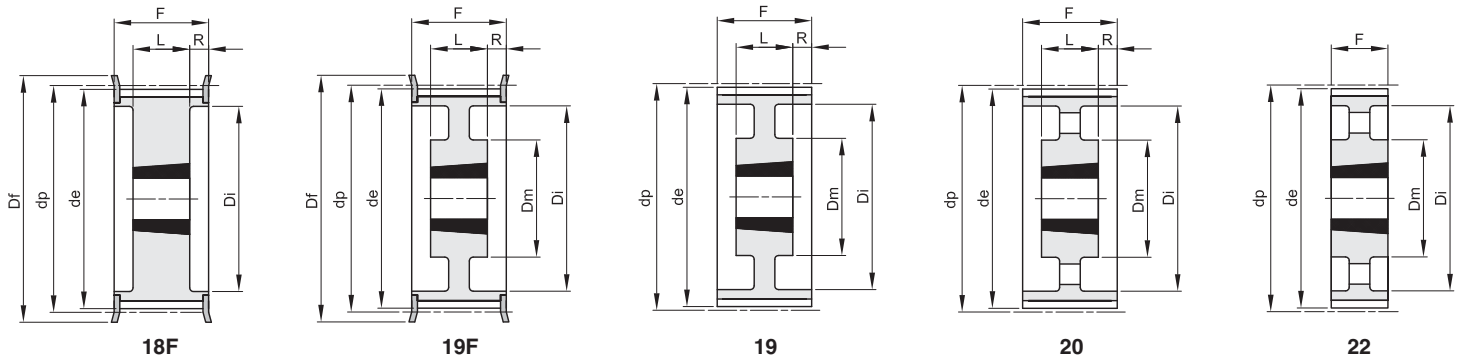
codice	tipo	materiale	denti	bussola	foro max	dp	de	Df	Dm	Di	F	L	R	n° flangia	Kg.
TL 28 14M 55	18F	St	28	2012	50	124,78	122,12	127		94	70	32	19	400	2,20
TL 30 14M 55	18F	St	30	2517	60	133,69	130,99	138		100	70	45	12,5	401	2,70
TL 32 14M 55	18F	St	32	2517	60	142,60	139,88	154		108	70	45	12,5	403	3,60
TL 34 14M 55	18F	St	34	2517	60	151,52	148,79	160		110	70	45	12,5	404	4,50
TL 36 14M 55	18F	St	36	2517	60	160,43	157,68	168		120	70	45	12,5	405	5,20
TL 38 14M 55	18F	St	38	2517	60	169,34	166,60	183		130	70	45	12,5	406	6,20
TL 40 14M 55	18F	St	40	2517	60	178,25	175,49	188		138	70	45	12,5	407	6,90
TL 44 14M 55	18F	St	44	3020	75	196,08	193,28	211		155	70	51	9,5	411	8,60
TL 48 14M 55	18F	St	48	3020	75	213,90	211,11	226		170	70	51	9,5	412	10,50
TL 56 14M 55	18F	GG	56	3020	75	249,55	246,76	256		208	70	51	9,5	416	13,50
TL 64 14M 55	19F	GG	64	3020	75	285,21	282,41	296	170	240	70	51	9,5	418	14,50
TL 72 14M 55	19	GG	72	3020	75	320,86	318,06		170	280	70	51	9,5		16,30
TL 80 14M 55	20	GG	80	3020	75	356,51	353,71		170	315	70	51	9,5		17,50
TL 90 14M 55	20	GG	90	3020	75	401,07	398,28		170	360	70	51	9,5		20,00
TL112 14M 55	20	GG	112	3020	75	499,11	496,32		170	457	70	51	9,5		28,20
TL144 14M 55	20	GG	144	3020	75	641,71	638,92		170	600	70	51	9,5		36,00
TL168 14M 55	20	GG	168	3020	75	748,66	745,87		170	706	70	51	9,5		48,50
TL192 14M 55	20	GG	192	3020	75	855,62	852,82		170	813	70	51	9,5		52,00

PULEGGE DENTATE A BUSSOLA CONICA PER CINGHIE SYNCHROBELT® - "HTD" SYNCHROBELT® "HTD" TIMING BELT PULLEYS FOR TAPER BUSHES

14M

PASSO 14 mm

PER CINGHIE LARGHEZZA 85 mm



Materiale: Acciaio (St)
Materiale: Ghisa (GG)

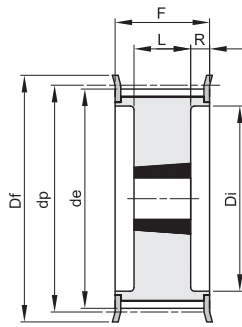
codice	tipo	materiale	denti	bussola	foro max	dp	de	Df	Dm	Di	F	L	R	n° flangia	Kg.
TL 28 14M 85	18F	St	28	2517	60	124,78	122,12	127		98	102	45	28,5	400	2,70
TL 30 14M 85	18F	St	30	2517	60	133,69	130,99	138		100	102	45	28,5	401	3,80
TL 32 14M 85	18F	St	32	2517	60	142,60	139,88	154		108	102	45	28,5	403	4,70
TL 34 14M 85	18F	St	34	2517	60	151,52	148,79	160		110	102	45	28,5	404	6,00
TL 36 14M 85	18F	St	36	3020	75	160,43	157,68	168		125	102	51	25,5	405	5,70
TL 38 14M 85	18F	St	38	3020	75	169,34	166,60	183		130	102	51	25,5	406	6,80
TL 40 14M 85	18F	St	40	3020	75	178,25	175,49	188		138	102	51	25,5	407	8,00
TL 44 14M 85	18F	St	44	3030	75	196,08	193,28	211		155	102	76	13	411	11,70
TL 48 14M 85	18F	St	48	3030	75	213,90	211,11	226		170	102	76	13	412	15,00
TL 56 14M 85	18F	GG	56	3525	90	249,55	246,76	256		210	102	65	18,5	416	19,00
TL 64 14M 85	19F	GG	64	3525	90	285,21	282,41	296	190	240	102	65	18,5	418	23,50
TL 72 14M 85	19	GG	72	3525	90	320,86	318,06		190	280	102	65	18,5		25,00
TL 80 14M 85	20	GG	80	3525	90	356,51	353,71		190	315	102	65	18,5		26,00
TL 90 14M 85	20	GG	90	3525	90	401,07	398,28		190	360	102	65	18,5		28,00
TL112 14M 85	20	GG	112	3525	90	499,11	496,32		190	457	102	65	18,5		36,00
TL144 14M 85	20	GG	144	3525	90	641,71	638,92		190	600	102	65	18,5		48,00
TL168 14M 85	20	GG	168	3525	90	748,66	745,87		190	706	102	65	18,5		60,00
TL192 14M 85	22	GG	192	4040	100	855,62	852,82		230	813	102	102			85,00

PULEGGE DENTATE A BUSSOLA CONICA PER CINGHIE SYNCHROBELT® - "HTD" SYNCHROBELT® "HTD" TIMING BELT PULLEYS FOR TAPER BUSHES

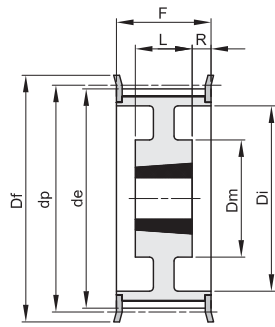
14M

PASSO 14 mm

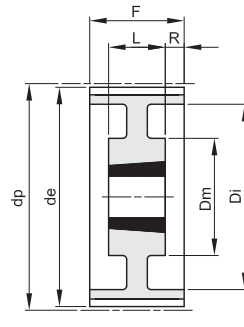
PER CINGHIE LARGHEZZA 115 mm



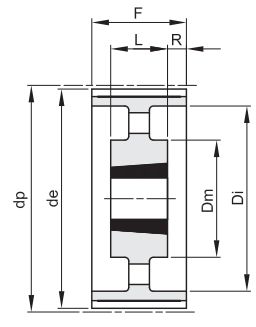
18F



19F



19



20

Materiale: Acciaio (St)
Materiale: Ghisa (GG)

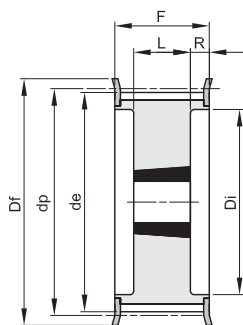
codice	tipo	materiale denti	bussola	foro max	dp	de	Df	Dm	Di	F	L	R	n° flangia	Kg.
TL 28 14M 115	18F	St	28	2517	60	124,78	122,12	127	98	133	45	44	400	3,80
TL 30 14M 115	18F	St	30	2517	60	133,69	130,99	138	100	133	45	44	401	5,00
TL 32 14M 115	18F	St	32	2517	60	142,60	139,88	154	108	133	45	44	403	6,80
TL 34 14M 115	18F	St	34	2517	60	151,52	148,79	160	110	133	45	44	404	6,90
TL 36 14M 115	18F	St	36	3020	75	160,43	157,68	168	125	133	51	41	405	7,00
TL 38 14M 115	18F	St	38	3020	75	169,34	166,60	183	130	133	51	41	406	8,50
TL 40 14M 115	18F	St	40	3020	75	178,25	175,49	188	138	133	51	41	407	9,10
TL 44 14M 115	18F	St	44	3030	75	196,08	193,28	211	155	133	76	28,5	411	13,00
TL 48 14M 115	18F	St	48	3030	75	213,90	211,11	226	170	133	76	28,5	412	16,00
TL 56 14M 115	18F	GG	56	3535	90	249,55	246,76	256	210	133	89	22	416	24,00
TL 64 14M 115	19F	GG	64	3535	90	285,21	282,41	296	190	240	89	22	418	32,00
TL 72 14M 115	19	GG	72	3535	90	320,86	318,06	190	280	133	89	22		31,00
TL 80 14M 115	20	GG	80	3535	90	356,51	353,71	190	315	133	89	22		32,00
TL 90 14M 115	20	GG	90	3535	90	401,07	398,28	190	360	133	89	22		37,00
TL112 14M 115	20	GG	112	3535	90	499,11	496,32	190	457	133	89	22		45,00
TL144 14M 115	20	GG	144	4040	100	641,71	638,92	230	600	133	102	15,5		63,00
TL168 14M 115	20	GG	168	4040	100	748,66	745,87	230	706	133	102	15,5		77,50
TL192 14M 115	20	GG	192	4040	100	855,62	852,82	230	813	133	102	15,5		95,00

PULEGGE DENTATE A BUSSOLA CONICA PER CINGHIE SYNCHROBELT® - "HTD" SYNCHROBELT® "HTD" TIMING BELT PULLEYS FOR TAPER BUSHES

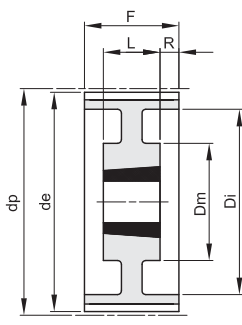
14M

PASSO 14 mm

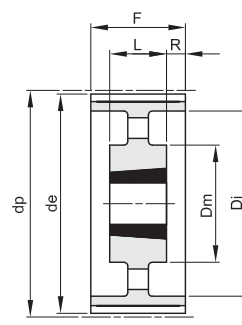
PER CINGHIE LARGHEZZA 170 mm



18F



19



20

Materiale: Acciaio (St)

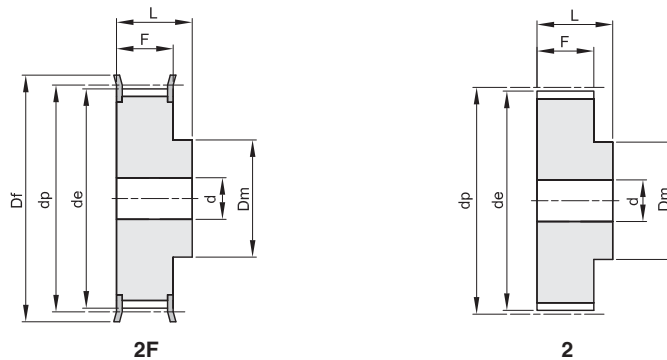
Materiale: Ghisa (GG)

codice	tipo	materiale	denti	bussola	foro max	dp	de	Df	Dm	Di	F	L	R	n° flangia	Kg.
TL 38 14M 170	18F	St	38	3030	75	169,34	166,60	183			187	76	55,5	406	11,70
TL 40 14M 170	18F	St	40	3030	75	178,25	175,49	188			187	76	55,5	407	13,00
TL 44 14M 170	18F	St	44	3535	90	196,08	193,28	211			187	89	49	411	15,00
TL 48 14M 170	18F	St	48	3535	90	213,90	211,11	226			187	89	49	412	19,00
TL 56 14M 170	18F	St	56	3535	90	249,55	246,76	256			187	89	49	416	28,50
TL 64 14M 170	18F	GG	64	4040	100	285,21	282,41	296			187	102	42,5	418	41,00
TL 72 14M 170	19	GG	72	4040	100	320,86	318,06		230		187	102	42,5		47,00
TL 80 14M 170	19	GG	80	4040	100	356,51	353,71		230		187	102	42,5		48,00
TL 90 14M 170	20	GG	90	4040	100	401,07	398,28		230		187	102	42,5		52,50
TL112 14M 170	20	GG	112	5050	125	499,11	496,32		265		187	127	30		74,50
TL144 14M 170	20	GG	144	5050	125	641,71	638,92		265		187	127	30		91,00
TL168 14M 170	20	GG	168	5050	125	748,66	745,87		265		187	127	30		116,00
TL192 14M 170	20	GG	192	5050	125	855,62	852,82		265		187	127	30		134,00

PULEGGE DENTATE PASSO METRICO SERIE "T" - DIN 7721-2

METRIC PULLEYS "T" - DIN 7721-2

T 5
PASSO 5 mm
 PER CINGHIA LARGHEZZA 10 mm



Materiale: Alluminio UNI 9006 - T6 (Al)
 adatto per l'ossidazione dura a spessore

codice	tipo	materiale	denti	de	Df	Dm	F	L	d	n° flangia	Kg.
21 T 5 10	2F	Al	10	15,05	19,5	8	15	21		200	0,01
21 T 5 12	2F	Al	12	18,25	23	10	15	21		201	0,01
21 T 5 14	2F	Al	14	21,45	25	13	15	21		203	0,02
21 T 5 15	2F	Al	15	23,05	28	16	15	21		204	0,02
21 T 5 16	2F	Al	16	24,60	32	18	15	21		205	0,03
21 T 5 18	2F	Al	18	27,80	32	20	15	21		205	0,03
21 T 5 19	2F	Al	19	29,40	36	22	15	21		206	0,04
21 T 5 20	2F	Al	20	31,00	36	23	15	21		206	0,04
21 T 5 22	2F	Al	22	34,25	38	24	15	21		207	0,05
21 T 5 24	2F	Al	24	37,40	42	26	15	21		208	0,06
21 T 5 25	2F	Al	25	38,95	44	26	15	21		209	0,06
21 T 5 26	2F	Al	26	40,60	44	26	15	21		209	0,06
21 T 5 27	2F	Al	27	42,20	48	30	15	21	8	210	0,07
21 T 5 28	2F	Al	28	43,75	48	32	15	21	8	210	0,07
21 T 5 30	2F	Al	30	46,95	51	34	15	21	8	211	0,07
21 T 5 32	2F	Al	32	50,10	54	38	15	21	8	212	0,09
21 T 5 36	2F	Al	36	56,45	63	38	15	21	8	215	0,11
21 T 5 40	2F	Al	40	62,85	66	40	15	21	8	216	0,14
21 T 5 42	2F	Al	42	66,00	71	40	15	21	8	217	0,18
21 T 5 44	2	Al	44	69,20		45	15	21	8		0,18
21 T 5 48	2	Al	48	75,55		50	15	21	8		0,20
21 T 5 60	2	Al	60	94,65		65	15	21	8		0,31

PULEGGE DENTATE PASSO METRICO SERIE "T" - DIN 7721-2

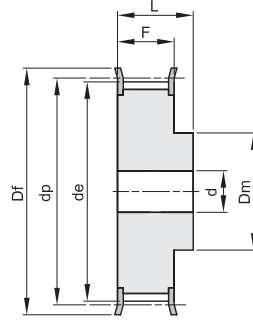
METRIC PULLEYS "T" - DIN 7721-2

T 5

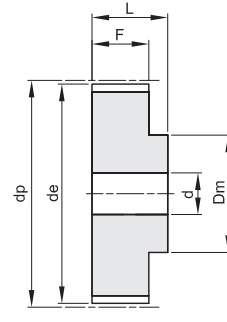
PASSO 5 mm

PER CINGHIA LARGHEZZA 16 mm

Materiale: Alluminio UNI 9006 - T6 (Al)
adatto per l'ossidazione dura a spessore



2F



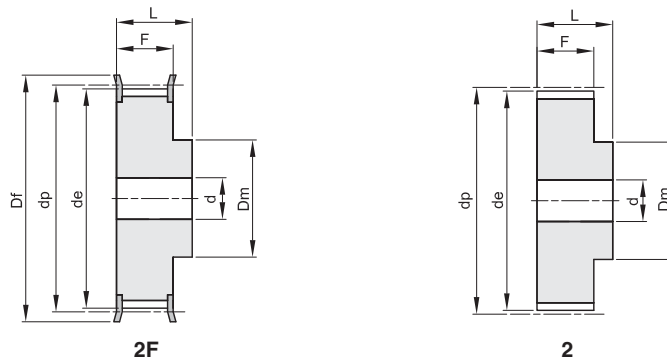
2

codice	tipo	materiale	dent	de	Df	Dm	F	L	d	n° flangia	Kg.
27 T 5 10	2F	Al	10	15,05	19,5	8	21	27		200	0,02
27 T 5 12	2F	Al	12	18,25	23	10	21	27		201	0,02
27 T 5 14	2F	Al	14	21,45	25	13	21	27		203	0,03
27 T 5 15	2F	Al	15	23,05	28	16	21	27		204	0,03
27 T 5 16	2F	Al	16	24,60	32	18	21	27		205	0,04
27 T 5 18	2F	Al	18	27,80	32	20	21	27		205	0,04
27 T 5 19	2F	Al	19	29,40	36	22	21	27		206	0,05
27 T 5 20	2F	Al	20	31,00	36	23	21	27		206	0,06
27 T 5 22	2F	Al	22	34,25	38	24	21	27		207	0,06
27 T 5 24	2F	Al	24	37,40	42	26	21	27		208	0,08
27 T 5 25	2F	Al	25	38,95	44	26	21	27		209	0,08
27 T 5 26	2F	Al	26	40,60	44	26	21	27		209	0,09
27 T 5 27	2F	Al	27	42,20	48	30	21	27	8	210	0,09
27 T 5 28	2F	Al	28	43,75	48	32	21	27	8	210	0,09
27 T 5 30	2F	Al	30	46,95	51	34	21	27	8	211	0,10
27 T 5 32	2F	Al	32	50,10	54	38	21	27	8	212	0,12
27 T 5 36	2F	Al	36	56,45	63	38	21	27	8	215	0,16
27 T 5 40	2F	Al	40	62,85	66	40	21	27	8	216	0,19
27 T 5 42	2F	Al	42	66,00	71	40	21	27	8	217	0,20
27 T 5 44	2	Al	44	69,20		45	21	27	8		0,23
27 T 5 48	2	Al	48	75,55		50	21	27	8		0,28
27 T 5 60	2	Al	60	94,65		65	21	27	8		0,43

PULEGGE DENTATE PASSO METRICO SERIE "T" - DIN 7721-2

METRIC PULLEYS "T" - DIN 7721-2

T 5
PASSO 5 mm
 PER CINGHIA LARGHEZZA 25 mm



Materiale: Alluminio UNI 9006 - T6 (Al)
 adatto per l'ossidazione dura a spessore

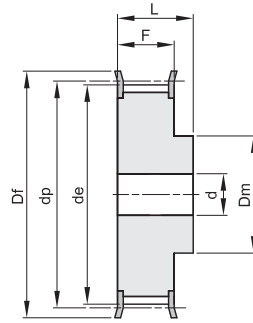
codice	tipo	materiale	denti	de	Df	Dm	F	L	d	n° flangia	Kg.
36 T 5 10	2F	Al	10	15,05	19,5	8	30	36		200	0,02
36 T 5 12	2F	Al	12	18,25	23	10	30	36		201	0,03
36 T 5 14	2F	Al	14	21,45	25	13	30	36		203	0,04
36 T 5 15	2F	Al	15	23,05	28	16	30	36		204	0,04
36 T 5 16	2F	Al	16	24,60	32	18	30	36		205	0,05
36 T 5 18	2F	Al	18	27,80	32	20	30	36		205	0,06
36 T 5 19	2F	Al	19	29,40	36	22	30	36		206	0,07
36 T 5 20	2F	Al	20	31,00	36	23	30	36		206	0,08
36 T 5 22	2F	Al	22	34,25	38	24	30	36		207	0,08
36 T 5 24	2F	Al	24	37,40	42	26	30	36		208	0,11
36 T 5 25	2F	Al	25	38,95	44	26	30	36		209	0,12
36 T 5 26	2F	Al	26	40,60	44	26	30	36		209	0,12
36 T 5 27	2F	Al	27	42,20	48	30	30	36	8	210	0,13
36 T 5 28	2F	Al	28	43,75	48	32	30	36	8	210	0,14
36 T 5 30	2F	Al	30	46,95	51	34	30	36	8	211	0,15
36 T 5 32	2F	Al	32	50,10	54	38	30	36	8	212	0,18
36 T 5 36	2F	Al	36	56,45	63	38	30	36	8	215	0,23
36 T 5 40	2F	Al	40	62,85	66	40	30	36	8	216	0,28
36 T 5 42	2F	Al	42	66,00	71	40	30	36	8	217	0,29
36 T 5 44	2	Al	44	69,20		45	30	36	8		0,31
36 T 5 48	2	Al	48	75,55		50	30	36	8		0,40
36 T 5 60	2	Al	60	94,65		65	30	36	8		0,61

PULEGGE DENTATE PASSO METRICO SERIE "T" - DIN 7721-2

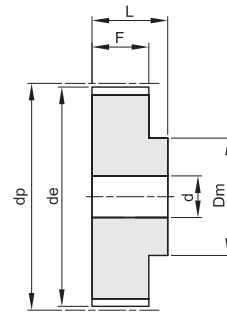
METRIC PULLEYS "T" - DIN 7721-2

T 10
PASSO 10 mm
 PER CINGHIA LARGHEZZA 16 mm

Materiale: Alluminio UNI 9006 - T6 (Al)
 adatto per l'ossidazione dura a spessore



2F



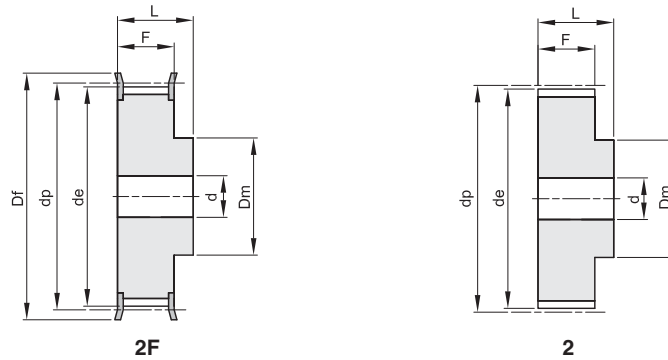
2

codice	tipo	materiale	denti	de	Df	Dm	F	L	d	n° flangia	Kg.
31 T 10 12	2F	Al	12	36,35	42	28	21	31	6	208	0,08
31 T 10 14	2F	Al	14	42,70	48	32	21	31	8	210	0,10
31 T 10 15	2F	Al	15	45,90	51	32	21	31	8	211	0,12
31 T 10 16	2F	Al	16	49,10	54	35	21	31	8	212	0,13
31 T 10 18	2F	Al	18	55,45	60	40	21	31	8	214	0,17
31 T 10 19	2F	Al	19	58,65	66	44	21	31	8	216	0,18
31 T 10 20	2F	Al	20	61,80	66	46	21	31	8	216	0,21
31 T 10 22	2F	Al	22	68,20	75	52	21	31	8	218	0,25
31 T 10 24	2F	Al	24	74,55	83	58	21	31	8	219	0,29
31 T 10 25	2F	Al	25	77,75	83	60	21	31	8	219	0,31
31 T 10 26	2F	Al	26	80,90	87	60	21	31	8	220	0,36
31 T 10 27	2F	Al	27	84,10	91	60	21	31	8	221	0,37
31 T 10 28	2F	Al	28	87,25	93	60	21	31	8	222	0,40
31 T 10 30	2F	Al	30	93,65	97	60	21	31	8	223	0,44
31 T 10 32	2F	Al	32	100,00	106	65	21	31	10	224	0,49
31 T 10 36	2F	Al	36	112,75	119	70	21	31	10	225	0,62
31 T 10 40	2F	Al	40	125,45	131	80	21	31	10	226	0,77
31 T 10 44	2	Al	44	138,20		88	21	31	10		1,00
31 T 10 48	2	Al	48	150,95		95	21	31	16		1,10
31 T 10 60	2	Al	60	189,15		110	21	31	16		1,70

PULEGGE DENTATE PASSO METRICO SERIE "T" - DIN 7721-2

METRIC PULLEYS "T" - DIN 7721-2

T 10
PASSO 10 mm
 PER CINGHIA LARGHEZZA 25 mm



Materiale: Alluminio UNI 9006 - T6 (Al)
 adatto per l'ossidazione dura a spessore

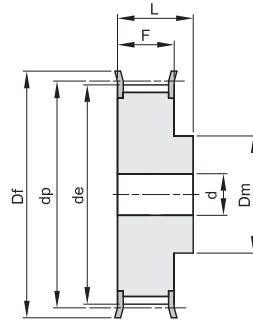
codice	tipo	materiale	denti	de	Df	Dm	F	L	d	n° flangia	Kg.
40 T 10 12	2F	Al	12	36,35	42	28	30	40	6	208	0,10
40 T 10 14	2F	Al	14	42,70	48	32	30	40	8	210	0,13
40 T 10 15	2F	Al	15	45,90	51	32	30	40	8	211	0,15
40 T 10 16	2F	Al	16	49,10	54	35	30	40	8	212	0,18
40 T 10 18	2F	Al	18	55,45	60	40	30	40	8	214	0,22
40 T 10 19	2F	Al	19	58,65	66	44	30	40	8	216	0,25
40 T 10 20	2F	Al	20	61,80	66	46	30	40	8	216	0,28
40 T 10 22	2F	Al	22	68,20	75	52	30	40	8	218	0,34
40 T 10 24	2F	Al	24	74,55	83	58	30	40	8	219	0,39
40 T 10 25	2F	Al	25	77,75	83	60	30	40	8	219	0,42
40 T 10 26	2F	Al	26	80,90	87	60	30	40	8	220	0,48
40 T 10 27	2F	Al	27	84,10	91	60	30	40	8	221	0,54
40 T 10 28	2F	Al	28	87,25	93	60	30	40	8	222	0,55
40 T 10 30	2F	Al	30	93,65	97	60	30	40	8	223	0,64
40 T 10 32	2F	Al	32	100,00	106	65	30	40	10	224	0,69
40 T 10 36	2F	Al	36	112,75	119	70	30	40	10	225	0,87
40 T 10 40	2F	Al	40	125,45	131	80	30	40	10	226	1,07
40 T 10 44	2	Al	44	138,20		88	30	40	10		1,35
40 T 10 48	2	Al	48	150,95		95	30	40	16		1,52
40 T 10 60	2	Al	60	189,15		110	30	40	16		2,34

PULEGGE DENTATE PASSO METRICO SERIE "T" - DIN 7721-2

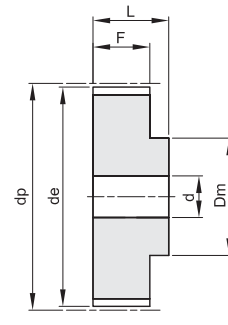
METRIC PULLEYS "T" - DIN 7721-2

T 10
PASSO 10 mm
 PER CINGHIA LARGHEZZA 32 mm

Materiale: Alluminio UNI 9006 - T6 (Al)
 adatto per l'ossidazione dura a spessore



2F



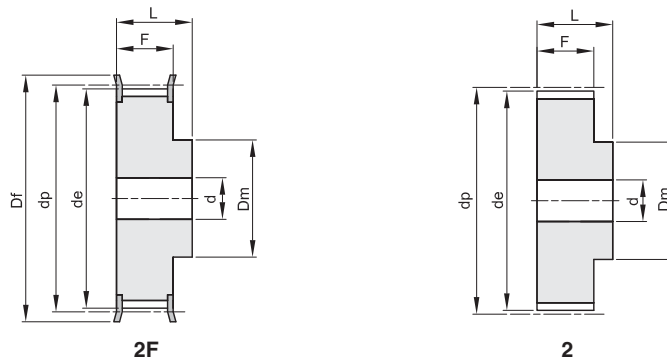
2

codice	tipo	materiale	dent	de	Df	Dm	F	L	d	n° flangia	Kg.
47 T 10 18	2F	Al	18	55,45	60	40	37	47	10	214	0,25
47 T 10 19	2F	Al	19	58,65	66	44	37	47	10	216	0,29
47 T 10 20	2F	Al	20	61,80	66	46	37	47	12	216	0,32
47 T 10 22	2F	Al	22	68,20	75	52	37	47	12	218	0,39
47 T 10 24	2F	Al	24	74,55	83	58	37	47	12	219	0,47
47 T 10 25	2F	Al	25	77,75	83	60	37	47	12	219	0,53
47 T 10 26	2F	Al	26	80,90	87	60	37	47	12	220	0,56
47 T 10 27	2F	Al	27	84,10	91	60	37	47	12	221	0,60
47 T 10 28	2F	Al	28	87,25	93	60	37	47	12	222	0,64
47 T 10 30	2F	Al	30	93,65	97	60	37	47	12	223	0,74
47 T 10 32	2F	Al	32	100,00	106	65	37	47	12	224	0,84
47 T 10 36	2F	Al	36	112,75	119	70	37	47	16	225	1,06
47 T 10 40	2F	Al	40	125,45	131	80	37	47	16	226	1,32
47 T 10 44	2	Al	44	138,20		88	37	47	16		1,61
47 T 10 48	2	Al	48	150,95		95	37	47	16		1,93
47 T 10 60	2	Al	60	189,10		110	37	47	16		3,00

PULEGGE DENTATE PASSO METRICO SERIE "T" - DIN 7721-2

METRIC PULLEYS "T" - DIN 7721-2

T 10
PASSO 10 mm
 PER CINGHIA LARGHEZZA 50 mm



Materiale: Alluminio UNI 9006 - T6 (Al)
 adatto per l'ossidazione dura a spessore

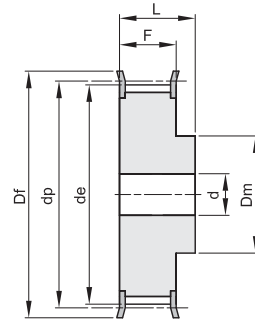
codice	tipo	materiale	denti	de	Df	Dm	F	L	d	n° flangia	Kg.
66 T 10 18	2F	Al	18	55,45	60	40	56	66	10	214	0,42
66 T 10 19	2F	Al	19	58,65	66	44	56	66	10	216	0,47
66 T 10 20	2F	Al	20	61,80	66	46	56	66	12	216	0,52
66 T 10 22	2F	Al	22	68,20	75	52	56	66	12	218	0,57
66 T 10 24	2F	Al	24	74,55	83	58	56	66	12	219	0,74
66 T 10 25	2F	Al	25	77,75	83	60	56	66	12	219	0,77
66 T 10 26	2F	Al	26	80,90	87	60	56	66	12	220	0,82
66 T 10 27	2F	Al	27	84,10	91	60	56	66	12	221	0,95
66 T 10 28	2F	Al	28	87,25	93	60	56	66	12	222	0,96
66 T 10 30	2F	Al	30	93,65	97	60	56	66	12	223	1,17
66 T 10 32	2F	Al	32	100,00	106	65	56	66	12	224	1,30
66 T 10 36	2F	Al	36	112,75	119	70	56	66	16	225	1,64
66 T 10 40	2F	Al	40	125,45	131	80	56	66	16	226	2,00
66 T 10 44	2	Al	44	138,20		88	56	66	16		2,36
66 T 10 48	2	Al	48	150,95		95	56	66	16		2,83
66 T 10 60	2	Al	60	189,10		110	56	66	16		4,37

PULEGGE DENTATE PASSO METRICO SERIE BAT PER CINGHIE "AT" METRIC PULLEYS "AT"

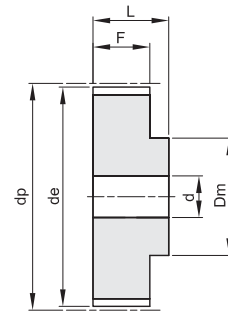
BAT 5

PASSO 5 mm

PER CINGHIA AT LARGHEZZA 10 mm



2F



2

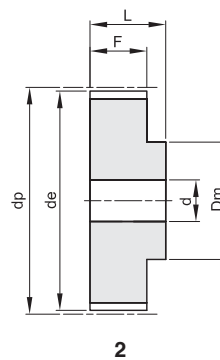
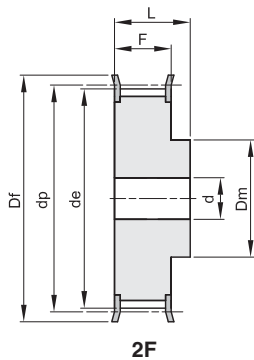
Materiale: Alluminio UNI 9006 - T6 (Al)
adatto per l'ossidazione dura a spessore

codice	tipo	materiale	denti	de	Df	Dm	F	L	d	n° flangia	Kg.
21 BAT 5 12	2F	Al	12	17,85	23	10	15	21		201	0,01
21 BAT 5 14	2F	Al	14	21,05	25	13	15	21		203	0,02
21 BAT 5 15	2F	Al	15	22,65	28	16	15	21		204	0,02
21 BAT 5 16	2F	Al	16	24,20	32	18	15	21		205	0,03
21 BAT 5 18	2F	Al	18	27,40	32	20	15	21		205	0,03
21 BAT 5 19	2F	Al	19	29,00	36	22	15	21		206	0,04
21 BAT 5 20	2F	Al	20	30,60	36	23	15	21		206	0,04
21 BAT 5 22	2F	Al	22	33,85	38	24	15	21		207	0,05
21 BAT 5 24	2F	Al	24	37,00	42	26	15	21		208	0,06
21 BAT 5 25	2F	Al	25	38,55	44	26	15	21		209	0,06
21 BAT 5 26	2F	Al	26	40,20	44	26	15	21		209	0,06
21 BAT 5 27	2F	Al	27	41,80	48	30	15	21	8	210	0,07
21 BAT 5 28	2F	Al	28	43,35	48	32	15	21	8	210	0,07
21 BAT 5 30	2F	Al	30	46,55	51	34	15	21	8	211	0,07
21 BAT 5 32	2F	Al	32	49,70	54	38	15	21	8	212	0,09
21 BAT 5 36	2F	Al	36	56,05	63	38	15	21	8	215	0,11
21 BAT 5 40	2F	Al	40	62,45	66	40	15	21	8	216	0,14
21 BAT 5 42	2F	Al	42	65,60	71	40	15	21	8	217	0,18
21 BAT 5 44	2	Al	44	68,80		45	15	21	8		0,18
21 BAT 5 48	2	Al	48	75,15		50	15	21	8		0,20
21 BAT 5 60	2	Al	60	94,25		65	15	21	8		0,31

PULEGGE DENTATE PASSO METRICO SERIE BAT PER CINGHIE "AT" METRIC PULLEYS "AT"

BAT 5
PASSO 5 mm
PER CINGHIA AT LARGHEZZA 16 mm

Materiale: Alluminio UNI 9006 - T6 (Al)
adatto per l'ossidazione dura a spessore



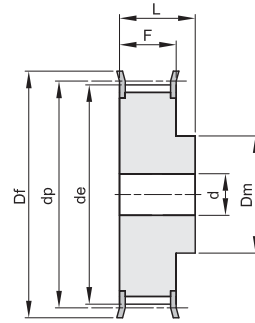
codice	tipo	materiale	denti	de	Df	Dm	F	L	d	n° flangia	Kg.
27 BAT 5 12	2F	Al	12	17,85	23	10	21	27		201	0,02
27 BAT 5 14	2F	Al	14	21,05	25	13	21	27		203	0,03
27 BAT 5 15	2F	Al	15	22,65	28	16	21	27		204	0,03
27 BAT 5 16	2F	Al	16	24,20	32	18	21	27		205	0,04
27 BAT 5 18	2F	Al	18	27,40	32	20	21	27		205	0,04
27 BAT 5 19	2F	Al	19	29,00	36	22	21	27		206	0,05
27 BAT 5 20	2F	Al	20	30,60	36	23	21	27		206	0,06
27 BAT 5 22	2F	Al	22	33,85	38	24	21	27		207	0,06
27 BAT 5 24	2F	Al	24	37,00	42	26	21	27		208	0,08
27 BAT 5 25	2F	Al	25	38,55	44	26	21	27		209	0,08
27 BAT 5 26	2F	Al	26	40,20	44	26	21	27		209	0,09
27 BAT 5 27	2F	Al	27	41,80	48	30	21	27	8	210	0,09
27 BAT 5 28	2F	Al	28	43,35	48	32	21	27	8	210	0,09
27 BAT 5 30	2F	Al	30	46,55	51	34	21	27	8	211	0,10
27 BAT 5 32	2F	Al	32	49,70	54	38	21	27	8	212	0,12
27 BAT 5 36	2F	Al	36	56,05	63	38	21	27	8	215	0,16
27 BAT 5 40	2F	Al	40	62,45	66	40	21	27	8	216	0,19
27 BAT 5 42	2F	Al	42	65,60	71	40	21	27	8	217	0,20
27 BAT 5 44	2	Al	44	68,80		45	21	27	8		0,23
27 BAT 5 48	2	Al	48	75,15		50	21	27	8		0,28
27 BAT 5 60	2	Al	60	94,25		65	21	27	8		0,43

PULEGGE DENTATE PASSO METRICO SERIE BAT PER CINGHIE "AT" METRIC PULLEYS "AT"

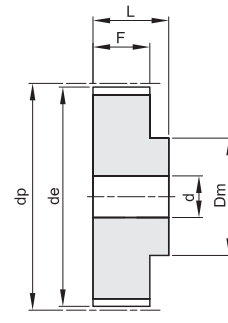
BAT 5

PASSO 5 mm

PER CINGHIA AT LARGHEZZA 25 mm



2F



2

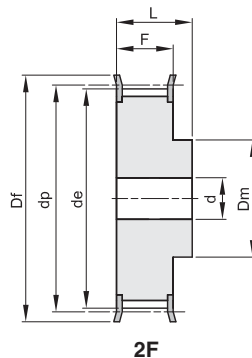
Materiale: Alluminio UNI 9006 - T6 (Al)
adatto per l'ossidazione dura a spessore

codice	tipo	materiale	denti	de	Df	Dm	F	L	d	n° flangia	Kg.
36 BAT 5 12	2F	Al	12	17,85	23	10	30	36		201	0,03
36 BAT 5 14	2F	Al	14	21,05	25	13	30	36		203	0,04
36 BAT 5 15	2F	Al	15	22,65	28	16	30	36		204	0,04
36 BAT 5 16	2F	Al	16	24,20	32	18	30	36		205	0,05
36 BAT 5 18	2F	Al	18	27,40	32	20	30	36		205	0,06
36 BAT 5 19	2F	Al	19	29,00	36	22	30	36		206	0,07
36 BAT 5 20	2F	Al	20	30,60	36	23	30	36		206	0,08
36 BAT 5 22	2F	Al	22	33,85	38	24	30	36		207	0,08
36 BAT 5 24	2F	Al	24	37,00	42	26	30	36	8	208	0,11
36 BAT 5 25	2F	Al	25	38,55	44	26	30	36	8	209	0,12
36 BAT 5 26	2F	Al	26	40,20	44	26	30	36	8	209	0,12
36 BAT 5 27	2F	Al	27	41,80	48	30	30	36	8	210	0,13
36 BAT 5 28	2F	Al	28	43,35	48	32	30	36	8	210	0,14
36 BAT 5 30	2F	Al	30	46,55	51	34	30	36	8	211	0,15
36 BAT 5 32	2F	Al	32	49,70	54	38	30	36	8	212	0,18
36 BAT 5 36	2F	Al	36	56,05	63	38	30	36	8	215	0,23
36 BAT 5 40	2F	Al	40	62,45	66	40	30	36	8	216	0,28
36 BAT 5 42	2F	Al	42	65,60	71	40	30	36	8	217	0,29
36 BAT 5 44	2	Al	44	68,80		45	30	36	8		0,31
36 BAT 5 48	2	Al	48	75,15		50	30	36	8		0,40
36 BAT 5 60	2	Al	60	94,25		65	30	36	8		0,61

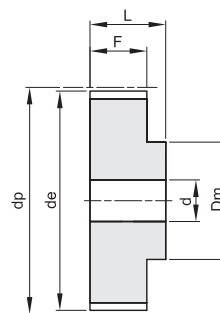
PULEGGE DENTATE PASSO METRICO SERIE BAT PER CINGHIE "AT" METRIC PULLEYS "AT"

BAT 10
PASSO 10 mm
PER CINGHIA AT LARGHEZZA 16 mm

Materiale: Alluminio UNI 9006 - T6 (Al)
adatto per l'ossidazione dura a spessore



2F

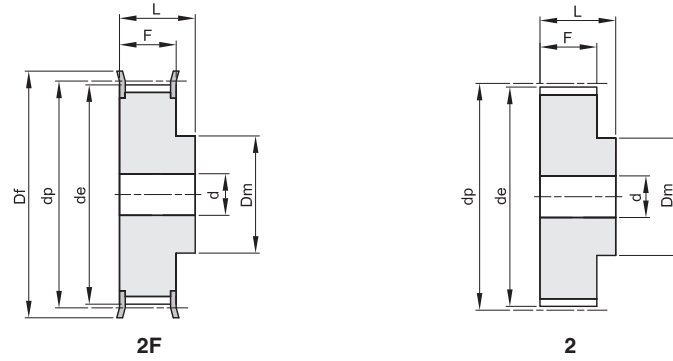


2

codice	tipo	materiale	denti	de	Df	Dm	F	L	d	n° flangia	Kg.
31 BAT 10 15	2F	Al	15	45,90	51	32	21	31	8	211	0,12
31 BAT 10 16	2F	Al	16	49,10	54	35	21	31	8	212	0,13
31 BAT 10 18	2F	Al	18	55,45	60	40	21	31	8	214	0,17
31 BAT 10 19	2F	Al	19	58,65	66	44	21	31	8	216	0,18
31 BAT 10 20	2F	Al	20	61,80	66	46	21	31	8	216	0,21
31 BAT 10 22	2F	Al	22	68,20	75	52	21	31	8	218	0,25
31 BAT 10 24	2F	Al	24	74,55	83	58	21	31	8	219	0,29
31 BAT 10 25	2F	Al	25	77,75	83	60	21	31	8	219	0,31
31 BAT 10 26	2F	Al	26	80,90	87	60	21	31	8	220	0,36
31 BAT 10 27	2F	Al	27	84,05	91	60	21	31	8	221	0,37
31 BAT 10 28	2F	Al	28	87,25	93	60	21	31	8	222	0,40
31 BAT 10 30	2F	Al	30	93,65	97	60	21	31	8	223	0,44
31 BAT 10 32	2F	Al	32	100,00	106	65	21	31	10	224	0,49
31 BAT 10 36	2F	Al	36	112,75	119	70	21	31	10	225	0,62
31 BAT 10 40	2F	Al	40	125,45	131	80	21	31	10	226	0,77
31 BAT 10 44	2	Al	44	138,20		88	21	31	10		1,00
31 BAT 10 48	2	Al	48	150,95		95	21	31	16		1,10
31 BAT 10 60	2	Al	60	189,15		110	21	31	16		1,70

PULEGGE DENTATE PASSO METRICO SERIE BAT PER CINGHIE "AT" METRIC PULLEYS "AT"

BAT 10
PASSO 10 mm
PER CINGHIA AT LARGHEZZA 25 mm



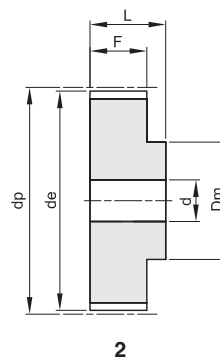
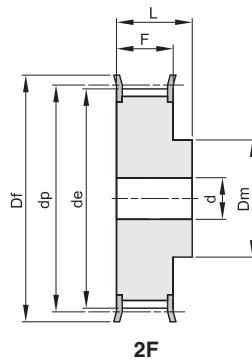
Materiale: Alluminio UNI 9006 - T6 (Al)
adatto per l'ossidazione dura a spessore

codice	tipo	materiale	denti	de	Df	Dm	F	L	d	n° flangia	Kg.
40 BAT 10 15	2F	Al	15	45,90	51	32	30	40	8	211	0,15
40 BAT 10 16	2F	Al	16	49,10	54	35	30	40	8	212	0,18
40 BAT 10 18	2F	Al	18	55,45	60	40	30	40	8	214	0,22
40 BAT 10 19	2F	Al	19	58,65	66	44	30	40	8	216	0,25
40 BAT 10 20	2F	Al	20	61,80	66	46	30	40	8	216	0,28
40 BAT 10 22	2F	Al	22	68,20	75	52	30	40	8	218	0,34
40 BAT 10 24	2F	Al	24	74,55	83	58	30	40	8	219	0,39
40 BAT 10 25	2F	Al	25	77,75	83	60	30	40	8	219	0,42
40 BAT 10 26	2F	Al	26	80,90	87	60	30	40	8	220	0,48
40 BAT 10 27	2F	Al	27	84,05	91	60	30	40	8	221	0,54
40 BAT 10 28	2F	Al	28	87,25	93	60	30	40	8	222	0,55
40 BAT 10 30	2F	Al	30	93,65	97	60	30	40	8	223	0,64
40 BAT 10 32	2F	Al	32	100,00	106	65	30	40	10	224	0,69
40 BAT 10 36	2F	Al	36	112,75	119	70	30	40	10	225	0,87
40 BAT 10 40	2F	Al	40	125,45	131	80	30	40	10	226	1,07
40 BAT 10 44	2	Al	44	138,20		88	30	40	10		1,35
40 BAT 10 48	2	Al	48	150,95		95	30	40	16		1,52
40 BAT 10 60	2	Al	60	189,15		110	30	40	16		2,34

PULEGGE DENTATE PASSO METRICO SERIE BAT PER CINGHIE "AT" METRIC PULLEYS "AT"

BAT 10
PASSO 10 mm
PER CINGHIA AT LARGHEZZA 32 mm

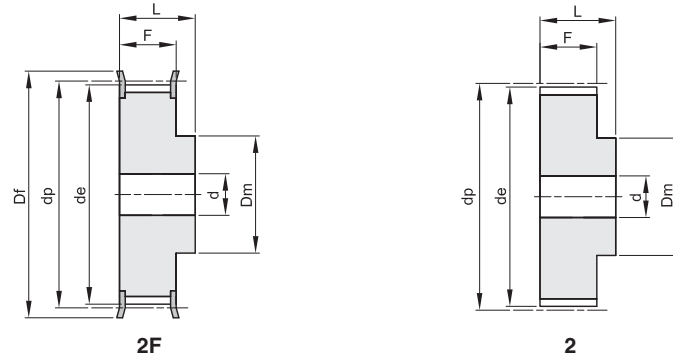
Materiale: Alluminio UNI 9006 - T6 (Al)
adatto per l'ossidazione dura a spessore



codice	tipo	materiale	denti	de	Df	Dm	F	L	d	n° flangia	Kg.
47 BAT 10 18	2F	Al	18	55,45	60	40	37	47	10	214	0,25
47 BAT 10 19	2F	Al	19	58,65	66	44	37	47	10	216	0,29
47 BAT 10 20	2F	Al	20	61,80	66	46	37	47	12	216	0,32
47 BAT 10 22	2F	Al	22	68,20	75	52	37	47	12	218	0,39
47 BAT 10 24	2F	Al	24	74,55	83	58	37	47	12	219	0,47
47 BAT 10 25	2F	Al	25	77,75	83	60	37	47	12	219	0,53
47 BAT 10 26	2F	Al	26	80,90	87	60	37	47	12	220	0,56
47 BAT 10 27	2F	Al	27	84,05	91	60	37	47	12	221	0,60
47 BAT 10 28	2F	Al	28	87,25	93	60	37	47	12	222	0,64
47 BAT 10 30	2F	Al	30	93,65	97	60	37	47	12	223	0,74
47 BAT 10 32	2F	Al	32	100,00	106	65	37	47	12	224	0,84
47 BAT 10 36	2F	Al	36	112,75	119	70	37	47	16	225	1,06
47 BAT 10 40	2F	Al	40	125,45	131	80	37	47	16	226	1,32
47 BAT 10 44	2	Al	44	138,20		88	37	47	16		1,61
47 BAT 10 48	2	Al	48	150,95		95	37	47	16		1,93
47 BAT 10 60	2	Al	60	189,15		110	37	47	16		3,00

PULEGGE DENTATE PASSO METRICO SERIE BAT PER CINGHIE "AT" METRIC PULLEYS "AT"

BAT 10
PASSO 10 mm
PER CINGHIA AT LARGHEZZA 50 mm

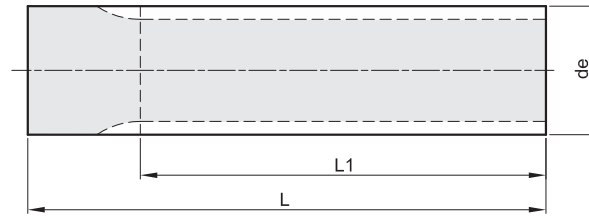


Materiale: Alluminio UNI 9006 - T6 (Al)
adatto per l'ossidazione dura a spessore

codice	tipo	materiale	denti	de	Df	Dm	F	L	d	n° flangia	Kg.
66 BAT 10 18	2F	Al	18	55,45	60	40	56	66	10	214	0,42
66 BAT 10 19	2F	Al	19	58,65	66	44	56	66	10	216	0,47
66 BAT 10 20	2F	Al	20	61,80	66	46	56	66	12	216	0,52
66 BAT 10 22	2F	Al	22	68,20	75	52	56	66	12	218	0,57
66 BAT 10 24	2F	Al	24	74,55	83	58	56	66	12	219	0,74
66 BAT 10 25	2F	Al	25	77,75	83	60	56	66	12	219	0,77
66 BAT 10 26	2F	Al	26	80,90	87	60	56	66	12	220	0,82
66 BAT 10 27	2F	Al	27	84,05	91	60	56	66	12	221	0,95
66 BAT 10 28	2F	Al	28	87,25	93	60	56	66	12	222	0,96
66 BAT 10 30	2F	Al	30	93,65	97	60	56	66	12	223	1,17
66 BAT 10 32	2F	Al	32	100,00	106	65	56	66	12	224	1,30
66 BAT 10 36	2F	Al	36	112,75	119	70	56	66	16	225	1,64
66 BAT 10 40	2F	Al	40	125,45	131	80	56	66	16	226	2,00
66 BAT 10 44	2	Al	44	138,20		88	56	66	16		2,36
66 BAT 10 48	2	Al	48	150,95		95	56	66	16		2,83
66 BAT 10 60	2	Al	60	189,15		110	56	66	16		4,37

BARRE DENTATE PER CINGHIE POSITIVE SYNCHROBELT® - ISO 5294

TIMING BELT BARS - ISO 5294



MXL PASSO 0,080" (2,032 mm)

MATERIALE: ALLUMINIO UNI 9006 - T6

codice	Z	de	L1	L	Kg.
MXL 12	12	7,25	50	75	0,01
MXL 14	14	8,55	50	75	0,01
MXL 15	15	9,19	50	75	0,01
MXL 16	16	9,84	50	75	0,02
MXL 18	18	11,13	50	75	0,02
MXL 20	20	12,43	90	120	0,04
MXL 22	22	13,72	125	140	0,05
MXL 24	24	15,02	125	140	0,06
MXL 25	25	15,66	125	140	0,07
MXL 26	26	16,31	125	140	0,08
MXL 28	28	17,60	125	140	0,09
MXL 30	30	18,90	125	140	0,10
MXL 32	32	20,19	125	140	0,12
MXL 34	34	21,48	125	140	0,13
MXL 36	36	22,78	140	140	0,15
MXL 38	38	24,07	140	140	0,17
MXL 40	40	25,36	140	140	0,19
MXL 42	42	26,66	140	140	0,20
MXL 44	44	27,95	140	140	0,23
MXL 45	45	28,60	140	140	0,24
MXL 48	48	30,54	140	140	0,27
MXL 50	50	31,83	140	140	0,30
MXL 60	60	38,30	160	160	0,49
MXL 70	70	44,77	160	160	0,67
MXL 72	72	46,06	160	160	0,72

XL PASSO 1/5" (5,08 mm)

MATERIALE: ALLUMINIO UNI 9006 - T6

codice	Z	de	L1	L	Kg.
XL 10	10	15,66	140	140	0,07
XL 11	11	17,28	140	140	0,08
XL 12	12	18,90	140	140	0,10
XL 13	13	20,51	140	140	0,11
XL 14	14	22,13	140	140	0,13
XL 15	15	23,75	140	140	0,16
XL 16	16	25,36	140	140	0,18
XL 17	17	26,98	140	140	0,20
XL 18	18	28,60	140	140	0,23
XL 19	19	30,22	140	140	0,26
XL 20	20	31,83	140	140	0,28
XL 21	21	33,45	160	160	0,36
XL 22	22	35,07	160	160	0,40
XL 23	23	36,60	160	160	0,44
XL 24	24	38,30	160	160	0,48
XL 25	25	39,92	160	160	0,51
XL 26	26	41,53	160	160	0,56
XL 27	27	43,15	160	160	0,60
XL 28	28	44,77	160	160	0,65
XL 29	29	46,39	160	160	0,70
XL 30	30	48,00	160	160	0,75
XL 32	32	51,24	160	160	0,87
XL 33	33	52,85	160	160	0,92
XL 34	34	54,47	160	160	0,98
XL 35	35	56,09	160	160	1,04
XL 36	36	57,70	160	160	1,10
XL 38	38	60,94	160	160	1,23
XL 39	39	62,56	160	160	1,30
XL 40	40	64,17	160	160	1,37
XL 41	41	65,79	160	160	1,43
XL 42	42	67,41	160	160	1,51
XL 43	43	69,02	160	160	1,58
XL 44	44	70,64	160	160	1,65
XL 48	48	77,11	160	160	1,98
XL 56	56	90,04	160	160	2,71
XL 60	60	96,51	160	160	3,10
XL 72	72	115,92	160	160	4,52

L PASSO 3/8" (9,525 mm)

MATERIALE: ALLUMINIO UNI 9006 - T6

codice	Z	de	L1	L	Kg.
L 10	10	29,56	140	140	0,23
L 11	11	32,59	140	140	0,28
L 12	12	35,62	160	160	0,39
L 13	13	38,65	160	160	0,46
L 14	14	41,68	160	160	0,55
L 15	15	44,72	160	160	0,63
L 16	16	47,75	160	160	0,73
L 17	17	50,78	160	160	0,82
L 18	18	53,81	160	160	0,93
L 19	19	56,84	160	160	1,04
L 20	20	59,88	160	160	1,16
L 21	21	62,91	160	160	1,28
L 22	22	65,94	160	160	1,41
L 23	23	68,97	160	160	1,55
L 24	24	72,00	160	160	1,69
L 27	27	81,10	160	160	2,15
L 30	30	90,20	160	160	2,67

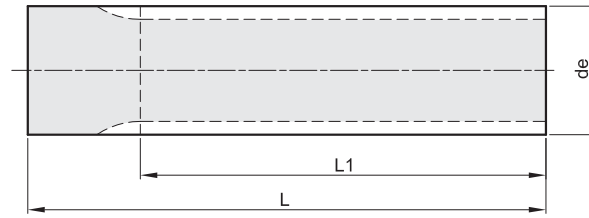
L PASSO 3/8" (9,525 mm)

MATERIALE: ACCIAIO

codice	Z	de	L1	L	Kg.
L 10	10	29,56	140	140	0,66
L 11	11	32,59	140	140	0,81
L 12	12	35,62	160	160	1,12
L 13	13	38,65	160	160	1,32
L 14	14	41,68	160	160	1,57
L 15	15	44,72	160	160	1,81
L 16	16	47,75	160	160	2,08
L 17	17	50,78	160	160	2,34
L 18	18	53,81	160	160	2,64
L 19	19	56,84	160	160	2,96
L 20	20	59,88	160	160	3,32
L 21	21	62,91	160	160	3,67
L 22	22	65,94	160	160	4,07
L 23	23	68,97	160	160	4,44
L 24	24	72,00	160	160	4,86
L 27	27	81,10	160	160	6,20
L 30	30	90,20	160	160	7,72

BARRE DENTATE PER CINGHIE SYNCHROBELT® - "HTD"

TIMING BELT BARS "HTD"



HTD 5M PASSO 5 mm

MATERIALE: ALLUMINIO UNI 9006 - T6

codice	Z	de	L1	L	Kg.
5M 12	12	17,96	160	160	0,08
5M 13	13	19,55	160	160	0,10
5M 14	14	21,14	175	200	0,16
5M 15	15	22,73	175	200	0,19
5M 16	16	24,32	175	200	0,21
5M 17	17	25,92	175	200	0,24
5M 18	18	27,51	200	200	0,27
5M 19	19	29,10	200	200	0,31
5M 20	20	30,69	200	200	0,35
5M 21	21	32,28	200	200	0,39
5M 22	22	33,87	200	200	0,43
5M 23	23	35,47	200	200	0,48
5M 24	24	37,06	200	200	0,52
5M 25	25	38,65	200	200	0,57
5M 26	26	40,24	200	200	0,62
5M 27	27	41,83	200	200	0,67
5M 28	28	43,42	200	200	0,73
5M 30	30	46,61	200	200	0,84
5M 32	32	49,79	200	200	0,97
5M 34	34	52,97	200	200	1,11
5M 36	36	56,16	200	200	1,25
5M 38	38	59,34	200	200	1,40
5M 40	40	62,52	200	200	1,55
5M 42	42	65,71	200	200	1,73
5M 44	44	68,89	200	200	1,90
5M 45	45	70,48	200	200	1,99
5M 48	48	75,25	200	200	2,27
5M 50	50	78,44	200	200	2,48
5M 60	60	94,35	200	200	3,60
5M 72	72	113,45	200	200	5,28

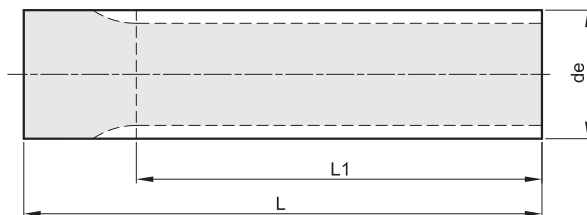
HTD 8M PASSO 8 mm

MATERIALE: ACCIAIO

codice	Z	de	L1	L	Kg.
8M 18	18	44,47	200	200	2,03
8M 19	19	47,01	200	200	2,30
8M 20	20	49,56	200	200	2,57
8M 21	21	52,11	200	200	2,88
8M 22	22	54,65	200	200	3,18
8M 23	23	57,20	200	200	3,52
8M 24	24	59,75	200	200	3,86
8M 25	25	62,29	200	200	4,23
8M 26	26	64,84	200	200	4,60
8M 28	28	69,93	200	200	5,40
8M 30	30	75,02	200	200	6,27
8M 32	32	80,12	200	200	7,20
8M 34	34	85,21	200	200	8,20
8M 35	35	87,76	200	200	8,71
8M 36	36	90,30	200	200	9,26
8M 38	38	95,40	200	200	10,39
8M 40	40	100,49	200	200	11,58
8M 44	44	110,68	200	200	14,16
8M 48	48	120,86	200	200	16,99

BARRE DENTATE PASSO METRICO SERIE "T" - DIN 7721-2

METRIC BARS "T" - DIN 7721-2



T 2,5 PASSO 2,5 mm

MATERIALE: ALLUMINIO UNI 9006 - T6

codice	Z	de	L1	L	Kg.
T 2,5 10	10	7,42	50	75	0,01
T 2,5 12	12	9,00	50	75	0,01
T 2,5 13	13	9,80	50	75	0,02
T 2,5 14	14	10,60	50	75	0,02
T 2,5 15	15	11,40	75	75	0,02
T 2,5 16	16	12,20	75	75	0,02
T 2,5 17	17	13,00	75	75	0,03
T 2,5 18	18	13,80	75	75	0,03
T 2,5 19	19	14,60	120	120	0,05
T 2,5 20	20	15,40	120	120	0,05
T 2,5 21	21	16,20	120	120	0,06
T 2,5 22	22	17,00	140	140	0,08
T 2,5 24	24	18,55	140	140	0,09
T 2,5 26	26	20,15	140	140	0,12
T 2,5 27	27	20,95	140	140	0,13
T 2,5 28	28	21,75	140	140	0,14
T 2,5 29	29	22,55	140	140	0,15
T 2,5 30	30	23,35	140	140	0,15
T 2,5 32	32	24,95	140	140	0,18
T 2,5 34	34	26,55	140	140	0,21
T 2,5 35	35	27,35	140	140	0,21
T 2,5 36	36	28,10	140	140	0,22
T 2,5 38	38	29,70	140	140	0,26
T 2,5 40	40	31,30	140	140	0,27
T 2,5 42	42	32,90	140	140	0,32
T 2,5 44	44	34,50	140	140	0,33
T 2,5 45	45	35,30	140	140	0,37
T 2,5 48	48	37,70	140	140	0,40
T 2,5 50	50	39,29	160	160	0,52
T 2,5 60	60	47,25	160	160	0,72
T 2,5 65	65	51,20	160	160	0,87
T 2,5 70	70	55,20	160	160	1,05
T 2,5 72	72	56,80	160	160	1,11
T 2,5 90	90	71,12	160	160	1,75
T 2,5 100	100	79,08	160	160	2,18

T 5 PASSO 5 mm

MATERIALE: ALLUMINIO UNI 9006 - T6

codice	Z	de	L1	L	Kg.
T 5 10	10	15,05	140	140	0,06
T 5 11	11	16,65	140	140	0,07
T 5 12	12	18,25	140	140	0,09
T 5 13	13	19,85	140	140	0,10
T 5 14	14	21,45	140	140	0,12
T 5 15	15	23,05	140	140	0,14
T 5 16	16	24,60	140	140	0,16
T 5 17	17	26,20	140	140	0,19
T 5 18	18	27,80	140	140	0,21
T 5 19	19	29,40	140	140	0,24
T 5 20	20	31,00	160	160	0,31
T 5 21	21	32,70	160	160	0,33
T 5 22	22	34,25	160	160	0,36
T 5 23	23	35,85	160	160	0,39
T 5 24	24	37,40	160	160	0,43
T 5 25	25	38,95	160	160	0,47
T 5 26	26	40,60	160	160	0,51
T 5 27	27	42,20	160	160	0,55
T 5 28	28	43,75	160	160	0,60
T 5 29	29	45,35	160	160	0,65
T 5 30	30	46,95	160	160	0,70
T 5 32	32	50,10	160	160	0,80
T 5 34	34	53,25	160	160	0,91
T 5 35	35	54,85	160	160	0,98
T 5 36	36	56,45	160	160	1,02
T 5 37	37	58,06	160	160	1,08
T 5 38	38	59,65	160	160	1,14
T 5 40	40	62,85	160	160	1,27
T 5 42	42	66,00	160	160	1,41
T 5 44	44	69,20	160	160	1,55
T 5 45	45	70,80	160	160	1,63
T 5 46	46	72,40	160	160	1,69
T 5 48	48	75,55	160	160	1,85
T 5 50	50	78,75	160	160	2,02
T 5 60	60	94,65	160	160	2,95
T 5 72	72	113,75	160	160	4,28
T 5 80	80	126,48	160	160	5,39
T 5 90	90	142,40	160	160	6,76
T 5 100	100	158,31	160	160	8,34

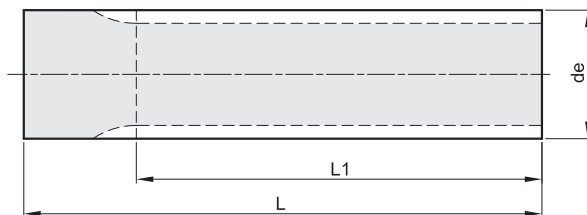
T 10 PASSO 10 mm

MATERIALE: ALLUMINIO UNI 9006 - T6

codice	Z	de	L1	L	Kg.
T 10 10	10	29,98	140	140	0,22
T 10 11	11	33,16	140	140	0,29
T 10 12	12	36,35	140	140	0,34
T 10 13	13	39,55	140	140	0,42
T 10 14	14	42,70	160	160	0,55
T 10 15	15	45,90	160	160	0,64
T 10 16	16	49,10	160	160	0,74
T 10 17	17	52,25	160	160	0,85
T 10 18	18	55,45	160	160	0,96
T 10 19	19	58,65	160	160	1,07
T 10 20	20	61,80	160	160	1,20
T 10 21	21	65,00	160	160	1,29
T 10 22	22	68,20	160	160	1,43
T 10 23	23	71,35	160	160	1,58
T 10 24	24	74,55	160	160	1,73
T 10 26	26	80,90	160	160	2,05
T 10 28	28	87,25	160	160	2,39
T 10 30	30	93,65	160	160	2,76
T 10 32	32	100,00	160	160	3,18
T 10 34	34	106,40	160	160	3,61
T 10 36	36	112,75	160	160	4,06
T 10 38	38	119,10	160	160	4,62
T 10 40	40	125,45	160	160	5,13
T 10 45	45	141,40	160	160	6,50
T 10 48	48	150,95	160	160	7,39
T 10 60	60	189,15	160	160	11,76
T 10 72	72	227,29	160	160	17,03

BARRE DENTATE PASSO METRICO SERIE BAT PER CINGHIE "AT"

METRIC BARS "AT"



BAT 5 PASSO 5 mm

MATERIALE: ALLUMINIO UNI 9006 - T6

BAT 10 PASSO 10 mm

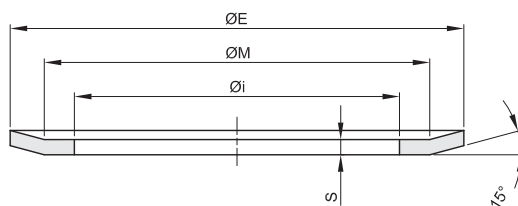
MATERIALE: ALLUMINIO UNI 9006 - T6

codice	Z	de	L1	L	Kg.
BAT 5 12	12	17,85	140	140	0,08
BAT 5 13	13	19,45	140	140	0,10
BAT 5 14	14	21,05	140	140	0,12
BAT 5 15	15	22,65	140	140	0,14
BAT 5 16	16	24,20	140	140	0,15
BAT 5 17	17	25,80	140	140	0,18
BAT 5 18	18	27,40	140	140	0,20
BAT 5 19	19	29,00	140	140	0,23
BAT 5 20	20	30,60	160	160	0,30
BAT 5 21	21	32,30	160	160	0,33
BAT 5 22	22	33,85	160	160	0,36
BAT 5 23	23	35,45	160	160	0,40
BAT 5 24	24	37,00	160	160	0,44
BAT 5 25	25	38,55	160	160	0,47
BAT 5 26	26	40,20	160	160	0,51
BAT 5 27	27	41,80	160	160	0,55
BAT 5 28	28	43,35	160	160	0,60
BAT 5 30	30	46,55	160	160	0,69
BAT 5 32	32	49,70	160	160	0,81
BAT 5 34	34	52,85	160	160	0,90
BAT 5 36	36	56,05	160	160	1,02
BAT 5 38	38	59,25	160	160	1,14
BAT 5 40	40	62,45	160	160	1,28
BAT 5 42	42	65,60	160	160	1,41
BAT 5 44	44	68,80	160	160	1,55
BAT 5 46	46	72,00	160	160	1,70
BAT 5 48	48	75,15	160	160	1,85
BAT 5 52	52	81,55	160	160	2,19
BAT 5 56	56	87,90	160	160	2,55
BAT 5 58	58	91,10	160	160	2,74
BAT 5 60	60	94,25	160	160	2,94
BAT 5 64	64	100,65	160	160	3,36
BAT 5 72	72	113,35	160	160	4,29

codice	Z	de	L1	L	Kg.
BAT 10 15	15	45,90	160	160	0,62
BAT 10 16	16	49,10	160	160	0,72
BAT 10 17	17	52,25	160	160	0,82
BAT 10 18	18	55,45	160	160	0,94
BAT 10 19	19	58,65	160	160	1,05
BAT 10 20	20	61,80	160	160	1,17
BAT 10 21	21	65,00	160	160	1,31
BAT 10 22	22	68,20	160	160	1,44
BAT 10 23	23	71,35	160	160	1,60
BAT 10 24	24	74,55	160	160	1,75
BAT 10 25	25	77,75	160	160	1,91
BAT 10 26	26	80,90	160	160	2,06
BAT 10 27	27	84,05	160	160	2,23
BAT 10 28	28	87,25	160	160	2,42
BAT 10 30	30	93,65	160	160	2,79
BAT 10 32	32	100,00	160	160	3,20
BAT 10 34	34	106,40	160	160	3,65
BAT 10 36	36	112,75	160	160	4,09
BAT 10 38	38	119,10	160	160	4,59
BAT 10 40	40	125,45	160	160	5,16
BAT 10 42	42	131,85	160	160	5,65
BAT 10 44	44	138,20	160	160	6,22
BAT 10 46	46	144,55	160	160	6,84
BAT 10 48	48	150,95	160	160	7,45
BAT 10 52	52	163,65	160	160	8,93
BAT 10 56	56	176,40	160	160	10,39
BAT 10 58	58	182,75	160	160	10,96
BAT 10 60	60	189,15	160	160	11,78
BAT 10 70	70	220,95	160	160	16,18

DIMENSIONI FLANGE PER PULEGGE DENTATE - ZINCATE

PULLEYS FLANGES DIMENSIONS ZINC PLATED



n° spessore S=0,5 mm				n° spessore S=1 mm				n° spessore S=1,5 mm				n° spessore S=2,5 mm			
flangia	Ø E	Ø M	Ø i	flangia	Ø E	Ø M	Ø i	flangia	Ø E	Ø M	Ø i	flangia	Ø E	Ø M	Ø i
100	13	10	6	200	19,5	17,5	12,5	300	36	31	25	400	127	120,2	104,7
101	15	12	8	201	23	17,5	12	301	38	34	28	401	138	130	108
102	16	13	9,5	202	23	20	14	302	42	38	30,5	402	146	138	116
104	18	15	11,5	203	25	22	15	303	44	40	33	403	154	146	122
105	19,5	17,5	12	204	28	24	18	304	48	43,5	37	404	160	150	128
106	23	17,5	12	205	32	28	21,5	305	51	47,5	40	405	168	162	135
107	23	20	14	206	36	31	25	306	54	50,5	43	406	183	170	145
108	25	22	15	207	38	34	28	307	57	53	46	407	188	180	158
109	28	24	18	208	42	38	30,5	308	60	57	47	409	198	188	165
110	32	28	21,5	209	44	40	33	309	63	57	48	410	200	192,8	172
111	36	31	25	210	48	43,5	37	310	66	61,5	52	411	211	198	173
112	38	34	28	211	51	47,5	40	311	71	65	56	412	226	214	190
113	42	38	30,5	212	54	50,5	43	312	75	68,5	60	414	240	224	192
114	48	43,5	37	213	57	53	46	313	79	73,5	64	415	256	240	220
				214	60	57	47	314	83	76,5	68	416	256	247	225
				215	63	57	48	315	87	82,5	72	418	296	287	252
				216	66	61,5	52	316	91	85,5	76				
				217	71	65	56	317	93	89	80				
				218	75	68,5	60	318	97	93	83				
				219	83	76,5	68	319	98	92	79,3				
				220	87	82,5	72	320	103	97	86				
				221	91	85,5	76	321	106	101	90				
				222	93	89	80	322	111	106	94				
				223	97	93	83	323	115	110	99				
				224	106	101	90	325	119	113,5	103				
				225	119	113,5	103	326	123	117,5	107				
				226	131	125,5	115	327	127	122	111				
								328	135	130	119				
								330	140	134,5	123				
								331	143	139	127				
								333	148	143	132				
								334	152	147,5	136				
								335	158	154	142				
								338	168	163	149,5				
								339	184	179	165				
								340	192	187	173				
								342	200	195	181				