



RENOLD | Tooth Chain

Quality & Perfection

Renold Chains for the Glass Industry



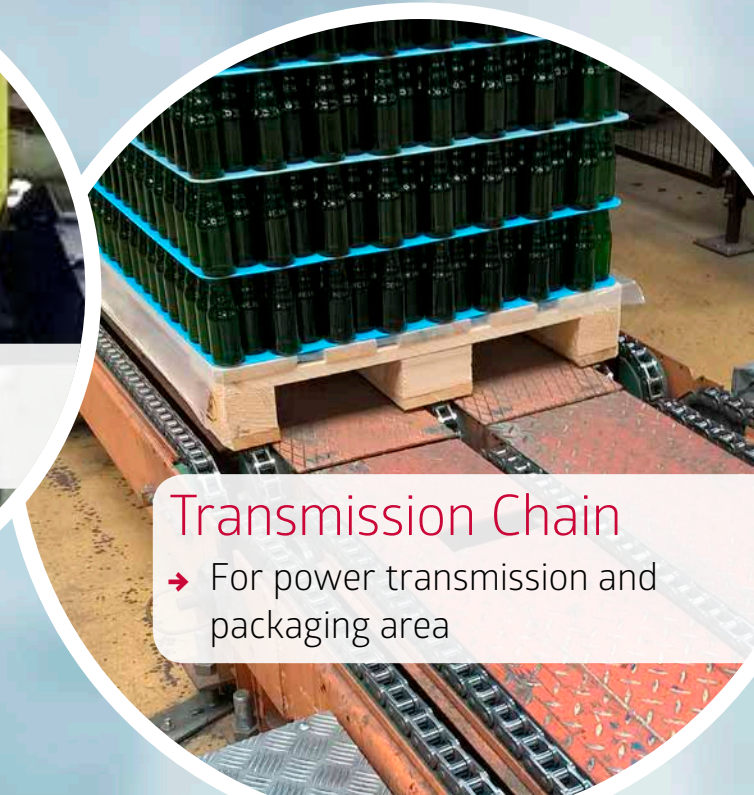
Tooth Chain

→ IS machine and cross conveyors



Conveyor Chain

→ Scraper conveyors

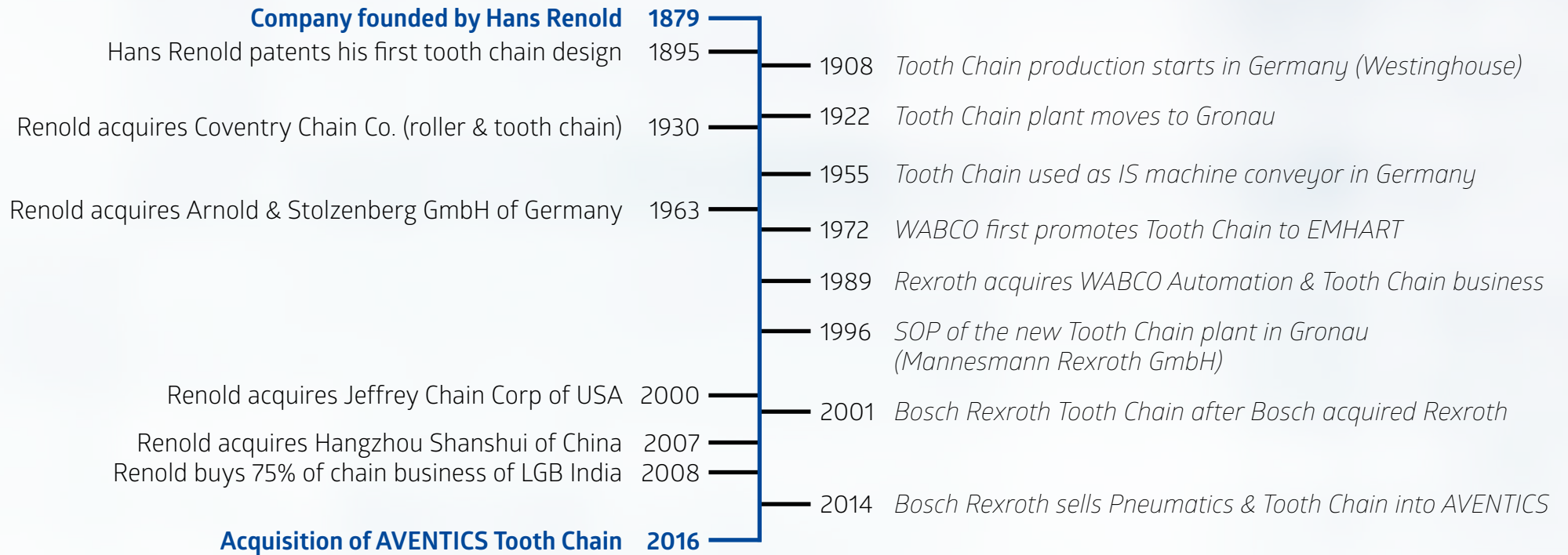


Transmission Chain

→ For power transmission and packaging area

Chain solutions for glass production – The one stop shop!

- Tooth Chains are exclusively Made in Germany, Quality standard ISO 9001:2015
- Conveyor and Transmission Chains are made according to the highest international standards!



Our joint History

- Committed to excellence in product quality, engineering innovation, and customer service, Renold has over 130 years experience in power transmission together with our extensive application knowledge.

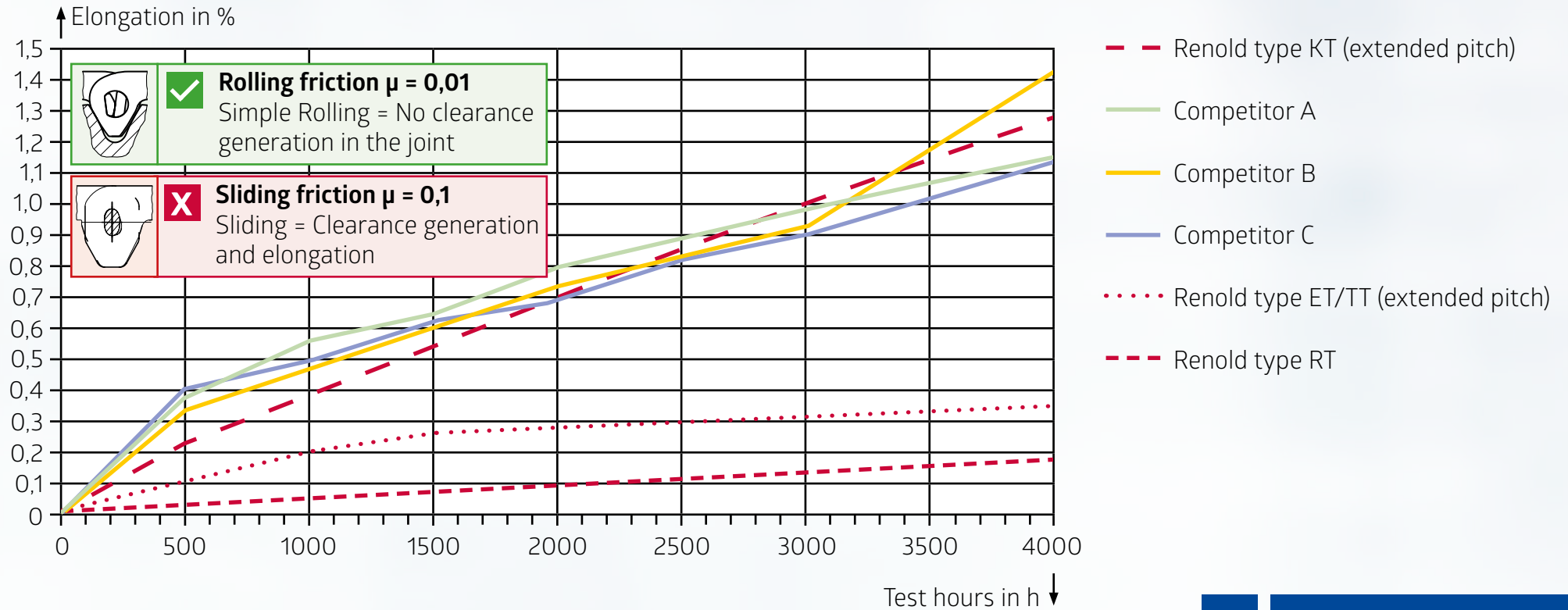


Requirements IS

4

Tooth Chain solutions for hot end production

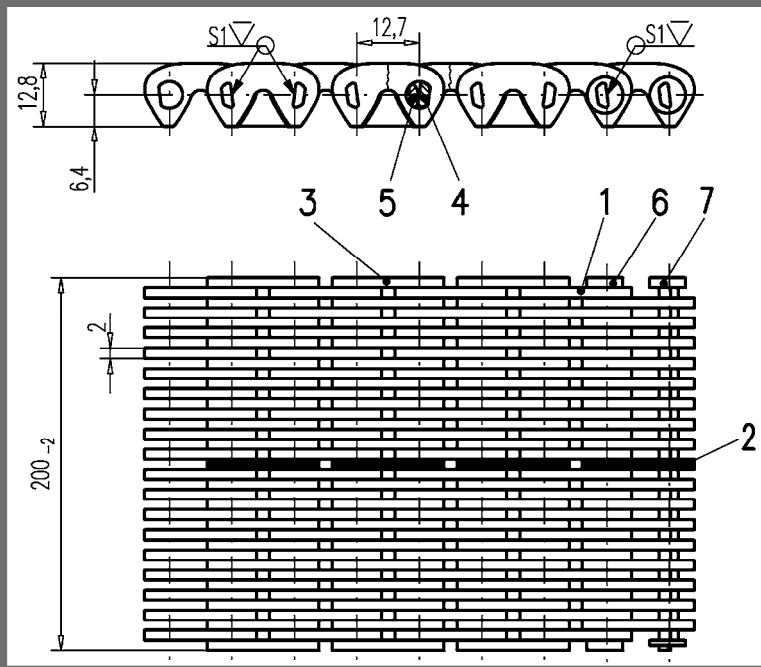
- High life time and reduced maintenance down time
 - Low elongation to keep the exact position over the lifetime
 - No gap with the transfer plates
 - Air flow through the chain for product cooling and stabilisation
 - Safe footprint for precise and stable transport of the products
 - Low sliding friction with the products
- High abrasion resistance of the plates due to sliding friction with the machine table
 - Low heat dissipation through the chain
 - High temperature resistance
 - Chemical resistance against coating products
- Renold can answer all!**



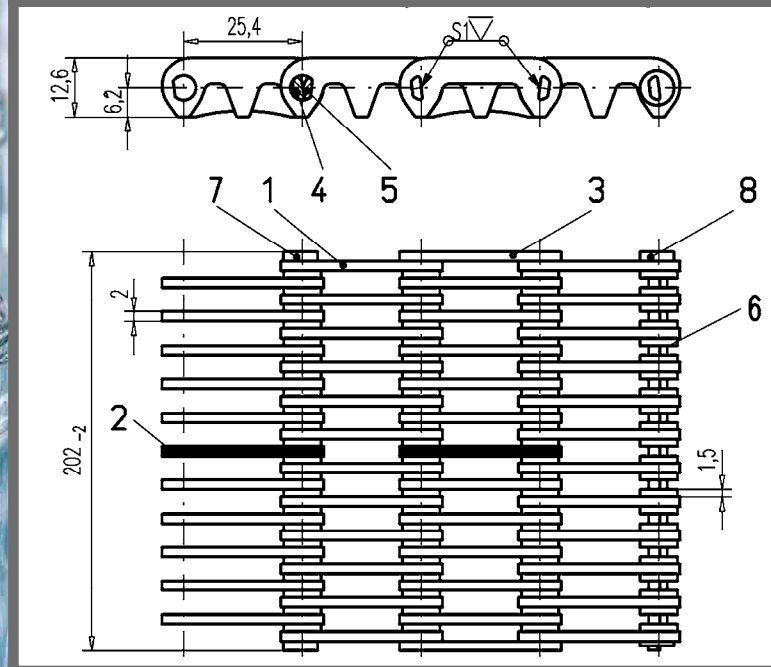
Unique 2-pin rolling pivot joint design

- The 2-pin rolling pivot joint considerably decreases elongation and thus increase life time
- Rolling of two pins versus sliding between the plates and the pin with a single pin pivot
- Low elongation to keep the exact position over the lifetime
- Every layout possible, also in stainless steel without influence on the life time

RT-200-CL air permeability of 12%



TS-200-CL air permeability of 53%

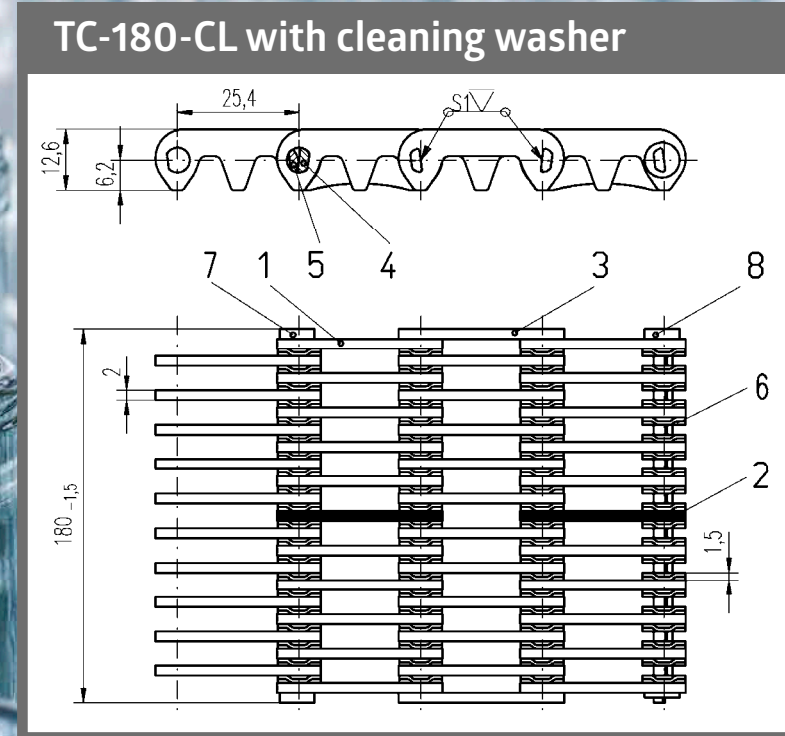
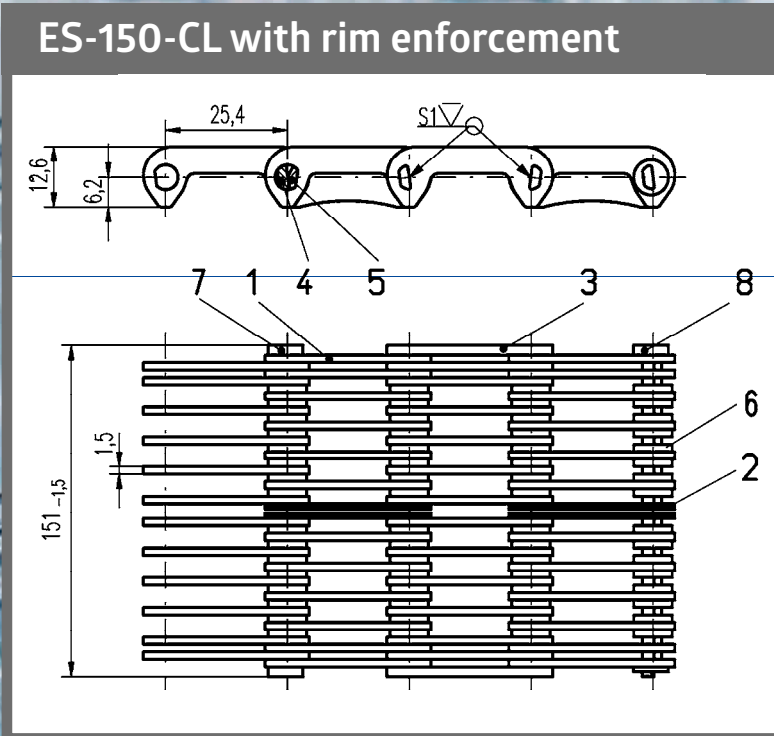


Every layout

6

Every layout possible without influence on lifetime

- ➔ The Renold 2-pin rolling pivot joint transfers all dynamic loads directly from pin to pin only
- ➔ No influence of the chain layout on the life time
- ➔ The widest range of airflow adjustment and reduction of product contact

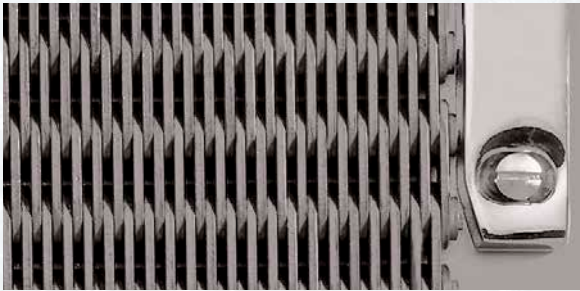


Special solutions

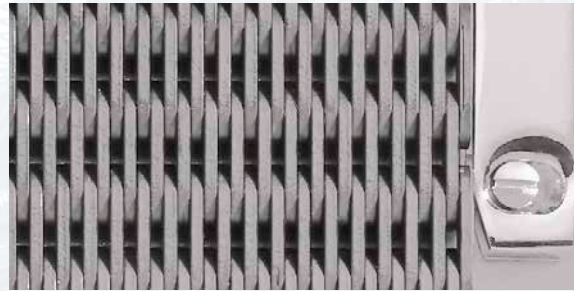
- ➔ Various common layouts like multi-guide/stacker versions, rim enforcement, double plates, inner loose sections with double rings, special thin washers (1 mm only!) to cope with all kind of products
- ➔ Special cleaning washers to keep chains flexible



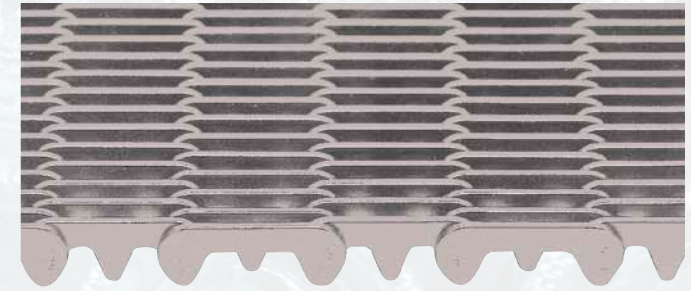
Riveted solution can lead to a collision with the guide rails



Riveted



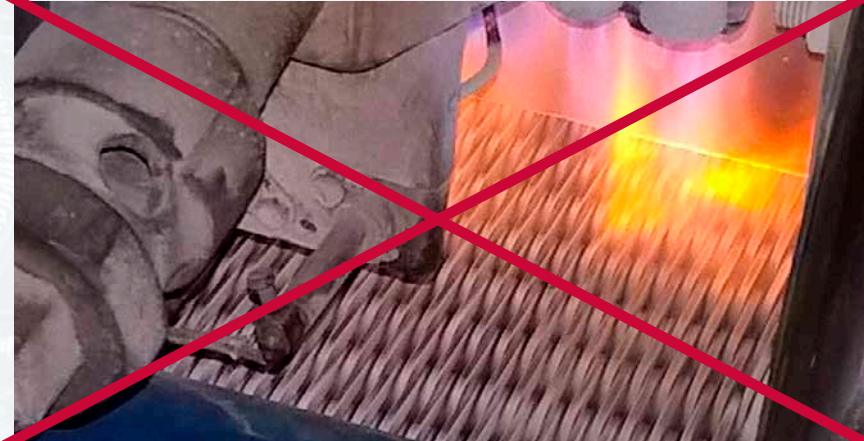
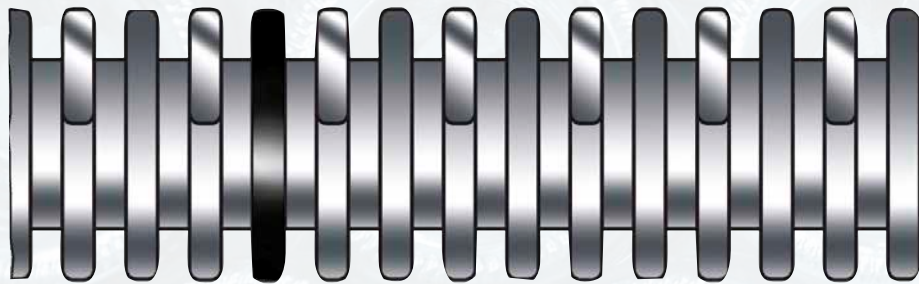
Laser-welded



TRILEG: link plate form with extended pitch

Laser welding of the external plates

- Smooth and large contact surface on both sides
- Minimum size gap (reliable transfer)
- No lateral movement of pins due to the welding
- Safe footprint for precise and stable transport of the products
- Patented TRILEG design for reduced wear abrasion and elongation



Renold solutions to avoid micro cracks

The base: Renold edge-rounded plates

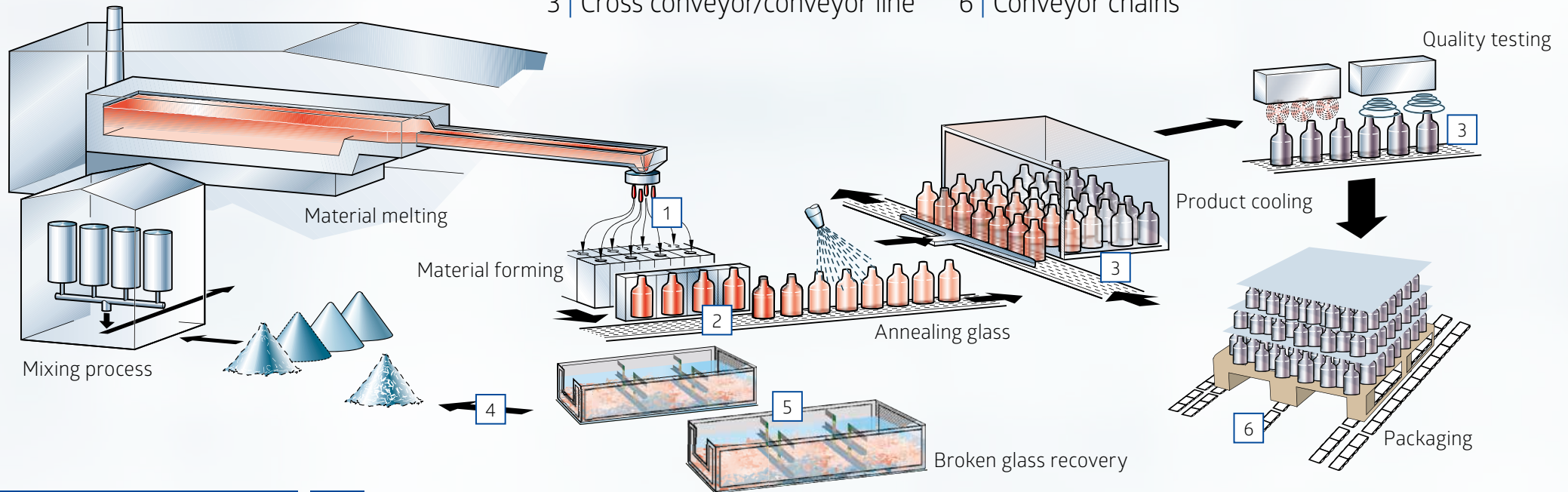
- Low sliding friction with the products
- Safe footprint for precise and stable transport of the products
- Reduces tipping of top heavy glass bottles
- Reduces forces for crosswise moving bottles

The premium: Use of stainless steel

- Lower heat dissipation rate
- Increase of resulting contact temperature glass to chain
- Improved heat resistance
- No pre-heating required

Example: hollow glass production process

- 1 | Chain drive/take-out gear
- 2 | IS-machine conveyor
- 3 | Cross conveyor/conveyor line
- 4 | Power transmission chains
- 5 | Scraper chains
- 6 | Conveyor chains



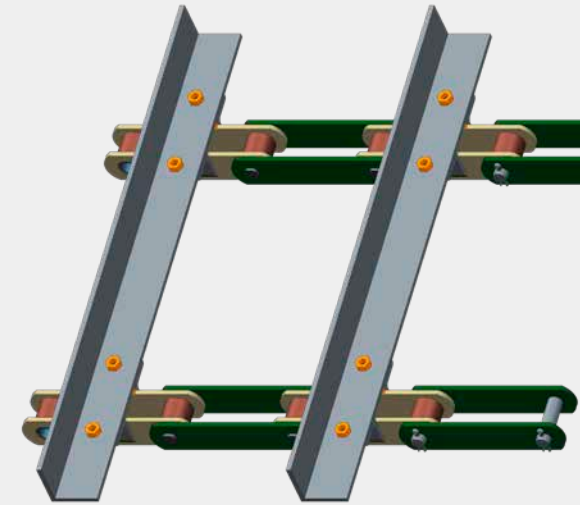
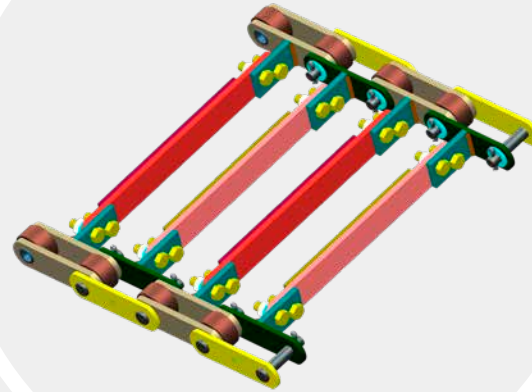
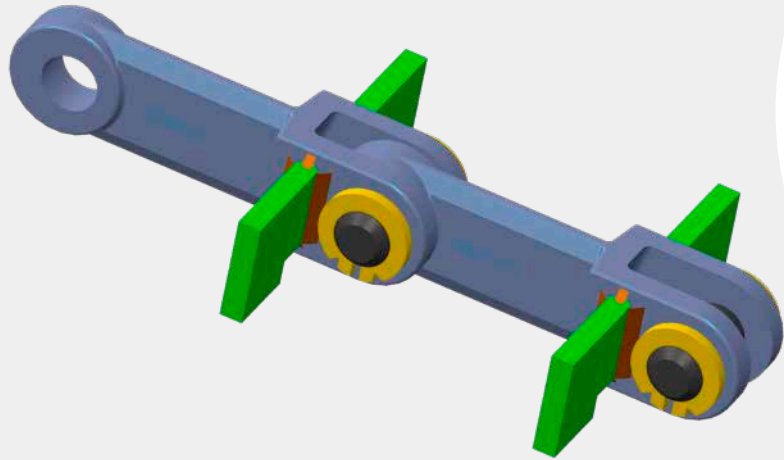
More chain solutions for glass production processes

Conveyors Chains - Scraper Conveyors

- ➔ More than 50 years experience in the production of conveyor chains
- ➔ Experience in all industry sectors
- ➔ Own engineering and development capacity

Certification

- ➔ QMS - ISO 9001-2008
- ➔ QMS - 14001
- ➔ QMS - API Spec - 7F
- ➔ QMS - 18001 - H&S



Conveyors – Scraper Chains

- Developed for high abrasive and wet environment
- Breaking loads of 100 to 550 kN are common
- Inboard or outboard roller design
- High impact loads are common with this type of system
- Pitch : 50.00 mm to 300.00 mm
- Scraper attachment (welded)
- Also available with special coating / hard chromed



Chain sprockets

12

Conveyor chain sprockets

Sprockets –
with shaft assembly

Sprockets –
with chain seating before despatch

Traction wheel –
OD Induction hardened for high
wear resistance



Renold Conveyor Chains and Scraper Conveyors are used in

- Glass industry
- Steel mill industry
- Cement industry
- Fertilizer industry
- Paper industry
- Mining industry
- Rice mill
- Food industry
- Poultry & slitter
- General conveyor application



Even more chain solutions

14

And even more chain solutions for glass production

Transmission chain for power transmission and packaging areas

- A global, market-leading supplier of chain
- Renold Synergy, offers unbeatable wear and fatigue performance
- Over 100 years experience
- 100% in house production
- Largest range of general transmission and solution chain

Chains made by Renold will help you to **increase lifetime** and **decrease maintenance downtime** at your production line.

You will **increase** your **productivity** and **decrease** total production **cost**.

Thank you for choosing Renold!

Renold GmbH

Zur Dessel 14
31028 Gronau (Leine), Germany
Phone +49 5182 5870
Fax +49 5182 58730
toothchain@renold.com
www.renoldtoothchain.com

Your Contact:

Your Contact:

The data specified only serve to describe the product. No statements concerning a certain condition or suitability for a certain application can be derived from our information. The information given does not re-lease the user from the obligation of own judgment and verification. It must be remembered that our products are subject to a natural process of wear and aging.

For local support contact your local Renold sales team,
visit www.renold.com or call +44 161 498 4600